

PARK NOTES

SPRING 2016

WORKS AND PLAYS WELL WITH OTHERS: HOW THE CONSERVANCY GETS THE JOB DONE

Generous donors: indispensable. Enthusiastic volunteers: vital.
Corporate, civic and community partners: invaluable.

To float the Conservancy's boat, one has to start with its donors. Beginning with its first recorded donor, **Kathleen Smith**, who contributed \$1.00 on June 22, 1978, the Conservancy has benefited from unceasing community largesse. Year in, year out, it's these funds that keep Carl Schurz Park the everlasting, evergreen community resource that frames what it means to live in this part of town.

Additionally, the Conservancy could not have accomplished one scintilla of what it has achieved without the sweat – and brain! – equity of its legions of volunteers. The troops of volunteer gardeners – zone and otherwise – playground moms and dads, summer concert and movie helpers, Gracie Square Art Show stalwarts, dog run heavy lifters and HOWL planners, the Tree Lighting booth managers... volunteers glue the Conservancy together.

To these two critical components of its success, one must also add the partnerships the Conservancy has cultivated over its long life. Some are well known or obvious. Others are



TRUE BLUE FRIENDS NYS Assembly Member Rebecca Seawright, NYC Council Member Ben Kallos, Empire State Center for the Book Director Rocco Staino and NYS Senator Liz Krueger at a 2014 Conservancy reception and dedication of Carl Schurz Park as a National Literary Landmark.

more like stealth partners, seamlessly folded into the inner workings of Conservancy programs, events or operations.

Many of the Conservancy's partners seek out the organization and offer their services, while others happily respond to a call or visit from a member of the staff, board or a volunteer.

It is surprising how many

there are, how crucial they have become and how well these partnerships serve both parties.

For starters, there's the most critical partner. The chicken before the egg. The locomotive at the head of the train. The NYC Department of Parks and Recreation.

The Conservancy has always taken great pride, and care, in

nurturing the relationship it has with Parks. In working with Parks Commissioners from **Henry Stern**, to **Adrian Benepe**, from **Veronica White** to **Mitchell Silver**, the Conservancy honors this partnership, especially as the Conservancy has taken on bigger and more extensive projects within the Park.

And, year after *continued on page 4*

CHAIRPERSON'S LETTER



JUDY HOWARD

Each year, as spring gets fully underway, walking through Carl Schurz Park never fails to bring me great joy and exhilaration. In a city of neighborhoods, I feel we are privileged to live in, arguably, one of the best. A rare blend of suburban and urban living, it provides an almost idyllic place to reside, in an otherwise hectic, noisy and impersonal city.

At the heart of our area, much like the village green of 'olde,' sits Carl Schurz Park.

And it is never more splendidly beckoning than in spring.

Our Park has a huge impact on all who live nearby and plays a vital role in the daily lives of many. Whether you live alone, have children, grandchildren or dogs, walk through the park, or choose to view it from a window, Carl Schurz provides the familiar 'backyard' we all seek.

In the past few decades, we have seen a resurgence in the growth of our sleepy neighborhood, as well as an increased demand on our limited resources. Through it all, and providing a constant friendly face on the ground, has been our intrepid and firmly committed volunteer force.

Our volunteers are among the best anywhere. They rise to every occasion, take care of every detail and still have time for a warm smile. Carl Schurz Park has never been more beautiful, and our events never more engaging because of the volunteers' seemingly limitless capacity.

This issue of Park Notes will focus on the lynch-pin of our success—working and playing well with others. It is this ability that is the key to our tunnel-vision. Thanks to our friends in the NYC Department of Parks, our engaged elected officials and our wonderfully supportive neighbors, we are able to focus firmly on the precious gem that is Carl Schurz Park.

Judy Howard

Judy Howard
Chair, Board of Directors

NUMBERED BUT NOT RESERVED: PARK BENCH INVENTORY COMPLETE

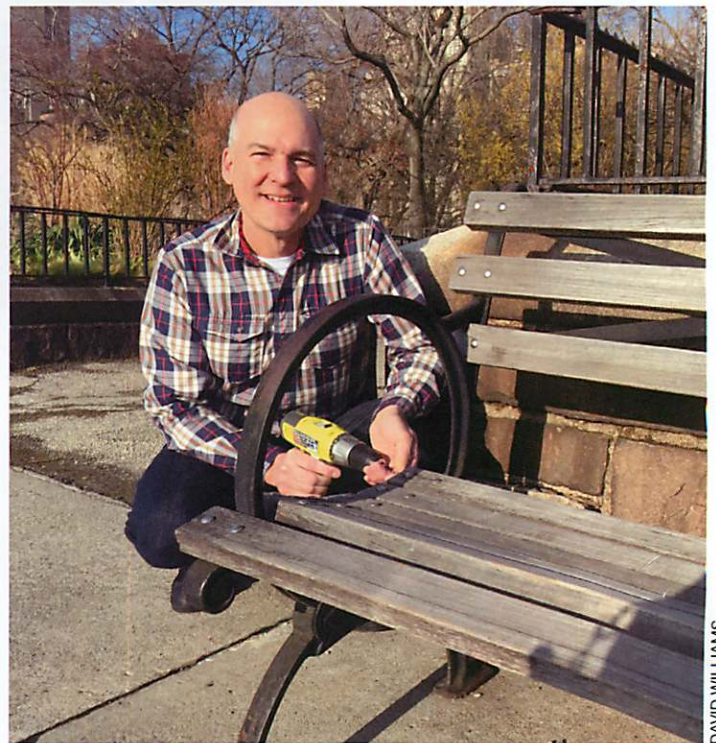
During your walks through the Park this winter, you may have noticed small metal labels attached to the back or end of almost all the benches. If you were out in the early morning this past November, you may even have seen the Conservancy installation team at work.

This tag installation is part of a virtually complete bench inventory project undertaken by the Infrastructure Committee. Of the Park's 722 benches, 647 have been tagged with numbers representing their locations in the Park. (Playground benches were not tagged due to its potential renovation.) The purpose of the project, which includes the use of a Global Information System database and mapping tool (QGIS), is to enable the Conservancy to more efficiently track existing

commemorative plaques and locations that are available for plaques, as well as the type and condition of all benches and related data.

Infrastructure Committee members **Jill Byatt**, **Kenny Creed** and **Clare Thomas** conceived the plan for the bench tag numbering system, and along with **Jeffrey Evans**, the team spent over a dozen mornings carefully installing the ID tags on benches. 📧

If you would like to endow a bench and purchase a commemorative plaque, please select your bench, make note of the number on the back or side and contact Patrick McCluskey, Director of Operations, at Patrick@carlschurzparknyc.org or 212.459.4455 for information about how to proceed.



Volunteer Kenny Creed, magic drill in hand, tackles bench plaque identification installation.

DAVID WILLIAMS

KID STUFF: COFFEE WITH CSPC PLAYGROUND CHAIR, LISA LATCHOLIA

It was ever thus: finding the perfect volunteer for the job can be a challenge. To find those seemingly self-less folks who are in there for the long haul. Who, like the Conservancy itself, work and play well with others. It was ALSO ever thus: the Conservancy has, for its long life, been fortunate to attract precisely those neighbors who “get it”. And who sign on. One of those exemplary souls is **Lisa Latcholia** (pronounced la-CHO-lah), Chair of the Conservancy’s Playground Committee, Board Secretary and Executive Committee Member.

We settled in over coffee at the York Social coffee bar to talk about the many joys, and the odd woe, of dedicating one’s time, energy and enthusiasm to the Conservancy’s mission.

And what she gets out of it. We asked Lisa how the Conservancy “latched” on to her. **Amy Kuhn**, (the former Chair) was easing out of the playground. Her child was almost eight years old. So, another mom and I met with the older group who saw new blood...

“And said YAY! And they ran!!” laughed Lisa.

They handed the committee’s big, historical and operational binder to her, including years-old mimeographed pages and told her to have at it. This was about twelve years ago and it couldn’t have come at a better time for Lisa, then a mother of two very young children. The Conservancy was growing dramatically and there was a need to plan and organize the year’s events so they could be



Lisa Latcholia

mapped out on the Conservancy calendar.

Plus... and this was a BIG plus for Lisa... she got out of the house:

“I get bored! I’m a Type A personality. When I quit work I wanted to be out with people. I’m an extrovert. I find people interesting!! And I like building community with people. Helping make New York City like a small town. I love it... I don’t know what I’d do if it weren’t for the Park...”

Lisa was able to corral her native organizational skills, honed from her years in advertising media buying. And during these formative years for event programming in the Park she, along with her fellow committee volunteers, was able to invent and build on what had

been in place.

“(The former committee) did the hayride. And they’d have random stuff. Then ‘the moms’ said it’d be fun to do an egg-hunt.

“The first egg-hunt we did (with 500 plastic eggs hand-stuffed with treats) twenty people showed up. Then, about 2003 things started taking off..”

Those 500 eggs are now 30,000!

It shouldn’t be much of a surprise to learn that Lisa was able to take what she developed and learned as a volunteer with the Conservancy to another level. A personal level.

She was asked about the business she started, inspired by the events she and her team built from the ground up in the Park.

“My friend (Lee Uehara)

and I created a business called **LISA & LEE’S THINK ‘N FUN** (ThinkNFunNYC.com). We do pre-soccer and Tot Fun Runs, bike riding lessons. Things like that. And we do private egg hunts and Halloween parties.

“I met (Lee)... she volunteered for me during the egg hunt. She is crazy like me, organizing things. That’s the thing! You meet all these interesting people.

Does Lisa herself need “new blood” on her committee?

“Yes! People can just come in and do whatever they want. But you have to work with Parks. People think that we at the Conservancy can do whatever we want. But, no... you have to arrange for permits. Things like that.”

“Just come on out. You get to meet other moms. It’s very lonely sometime when you have little kids. You get to meet other people in a space that’s common to everyone. My kids used to consider the Park their back yard.”

We talked about what’s different about “city park play”.

“My kids are so used to parks. My nephew and nieces are from the suburbs and they’re not used to the give and take of a NYC playground. Everybody touches every toy in New York City!” ☺

Want to see what volunteering for the Carl Schurz Park Playground Committee can hold for you? Call the Conservancy office at 212.459.4455 and find out.

continued from page 1

year, it has been Manhattan Borough Parks Commissioner **William Castro** who has steadfastly supported the work of the Conservancy. The Guiding Light for the Conservancy at Parks, “Bill” has ensured that one (Parks) + one (Conservancy) = three. Together, the Commissioner and the Conservancy have built a lasting legacy for generations to come.

Put another way, the Conservancy does its good works at the discretion of the Parks Department.

Then there are our City and State elected officials. They have access to much needed, and much sought after, public funds. And, to a person, they champion NYC parks. Our Park, Carl Schurz Park. Several go way back in the Conservancy’s history, while others have just begun their good works. Some have moved on to other elected, or private sector jobs.

All have left, or are leaving, their imprint on Carl Schurz Park.

For example, the Conservancy worked closely with then-Council Member **Jessica Lappin** and then-Borough President **Scott Stringer** to secure the \$200,000 required to renovate the two dog runs in the Park.

New York State Senator **Liz Krueger** is a longtime friend, and a staunch advocate for Carl Schurz Park. Among her contributions to the Park is a “gator”, one of the indispensable heavy vehicles used by Parks’ staff to move material about the Park.

The Senator is a welcome presence at many Conservancy events. And a blue-chip supporter of its cause:

“The Carl Schurz Park Conservancy has done such a great job in making the Park a wonderful community asset,” writes the Senator.

“One of the big perks of my job is attending the annual dog

growing, beautiful centerpiece of this community.”

Newer to district representation are the new political bold face names: Council Member **Ben Kallos**, and Assembly Member, **Rebecca Seawright**,

They bring the community together.”

Patrick McCluskey, Conservancy Director of Operations, knows firsthand how engaged the district’s elected officials are in the life of the Park:

“Carl Schurz Park is the jewel of the Upper East Side and Cross Church NYC has been blessed by the opportunity to serve our neighbors there by partnering with the CSP Conservancy. The Conservancy has been a true godsend to this community and a gift to all who walk through this picturesque park.” Lead Pastor Drew Griffin of Cross Church

halloween costume contest – I look forward to it every year! My rural upstate colleagues in the Senate sometimes ask me why I’m so concerned with funding for parks; after all, they’ve got more land than they know what to do with. But here in New York City we have to fight for every inch of green space, and I’m committed to making sure Albany understands the importance of investing in our urban gems like Carl Schurz Park.”

Manhattan Borough President **Gale Brewer**, an exemplary public servant for many years, frequently attends Conservancy events throughout the year and has brought the city’s MAKE MUSIC NEW YORK spring concert to Carl Schurz Park for several years.

“The way Carl Schurz Park brings together the Yorkville community is one of the reasons our annual *Make Music New York* concert in the park is one of my favorite events,” said the Borough President. “I thank the Conservancy for working to keep Carl Schurz Park a green,

the former working tirelessly on a renovation of the Park playground. And the latter allocating key funds for Park operations and projects.

“Raising two children in New York, Carl Schurz Park became not just a staple for my family, but also our backyard,” writes the Assembly Member. “Between the Halloween Howl, the menorah lighting, Christmas caroling and the Easter egg hunt, no holiday is ever complete without a stop at Carl Schurz. As an Assembly Member, I am proud to be a strong supporter of a park that does so much for children, families and seniors.”

Council Member Kallos notes that “Carl Schurz Park is where so many of us spend our days jogging, walking dogs, sun bathing or on the playground that will be receiving \$1.2 million in funds from my Council District. A thank you to the Conservancy and volunteers for taking care of the park and hosting annual events from the art show, to the Halloween Howl, to the tree lighting, to summer films and performances.

“I can’t tell you how many times elected officials have said to me, ‘we go to a lot of events, but the ones we look forward to the most are the ones here at Carl Schurz Park.’”

The private sector also steps up to the plate on behalf of the Conservancy’s efforts. In addition to the donations the Conservancy’s business partners have made, many firms have sent employees into the Park to assist in a number of Park projects, ranging from gardening to fence painting to playground events. Corporations as varied as Ralph Lauren, MoMA, and Deloitte have rolled up their collective sleeves to improve the Park.

The playground events have benefited from the special participation of the Manhattan Chamber of Commerce, especially in the person of the departing president, **Nancy Ploeger**. And the Second Avenue Business Association.

A few of the partners the Conservancy cherishes are, in fact, neighbors. Institutions

that recognize a healthy Carl Schurz Park is critical to their mission as well.

Take, for example, the Chapin School:

“The Chapin School is grateful for its proximity to Carl Schurz Park as it enriches and sustains our school community,” says Associate Head of School, **M.J. Quigley**. “School students of all ages play in the park and teachers craft curricula that engage with the space as a rich site for learning. Each year, Kindergarten students raise and release butterflies on the green, while seniors develop landscapes in art based on plants and structures in the area. As both beneficiaries and stewards of this beautiful space, we are committed to its careful preservation, and value our continued partnership with the CSPC.”

And this from **Jane Foley**

Fried, Brearley’s Head of School, who believes that “Carl Schurz Park is a treasured neighbor... (It) plays a wonderful role in day-to-day life at Brearley. Our students have learned so much volunteering there and are proud to have planted two little evergreens in the Park that are now big, mature trees for all to enjoy. Girls in all the School’s divisions enjoy the fresh air, open space and inviting greenery.”

Both of these neighborhood schools generously host important social events for the Conservancy, such as the cocktail reception before the annual ‘Party on the Park’ dinner parties. The cocktail party is an integral part of the POP; without Brearley and Chapin’s invaluable support and large, attractive spaces, the Conservancy would not be able to hold the cocktail party in the

neighborhood.

For the last decade, Chapin has also been home to the luncheon for the Conservancy’s “Volunteer Appreciation Day”, attended by over 100 volunteers. Students, teachers and administrators from both schools also work with Conservancy volunteers to clean the Park up in spring. For many years, the Brearley Environmental Committee (BEAC) headed to the Peter Pan Garden to assist with regular Conservancy volunteers. This environmental group also raised enough money, through cookie sales, to donate a pine tree and a Gold Atlas Cedar to the Park.

A special mention must also go to Cross Church, and its Lead Pastor **Drew Griffin**. Going on three years, Cross Church has brought dozens of energetic volunteers to assist at many of the



Conservancy events.

Pastor Drew notes that, “Carl Schurz Park is the jewel of the Upper East Side, and Cross Church NYC has been blessed by the opportunity to serve our neighbors there by partnering with the CSP Conservancy. The Conservancy has been a true godsend to this community and a gift to all who walk through this picturesque park.”

Last, but certainly not least, the Conservancy would not be able to present its free public events without the express approval of the NYPD and its Department of Community Affairs. Additionally, police coverage at these events has ensured that things run as smoothly as possible.

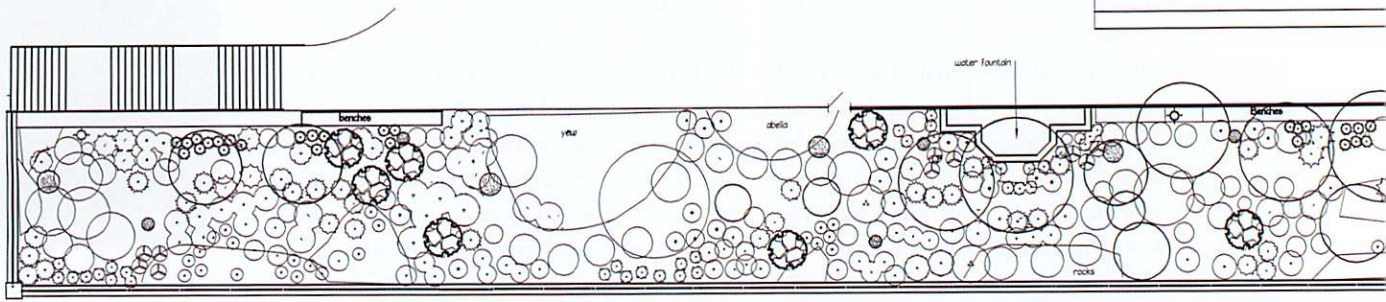
Ann Meschery, Conservancy Director of In-Park Events puts it like this:

“For many years now the Conservancy has worked with Detective **Chris Helms** of NYPD 19th Precinct who has helped to facilitate our needs in the implementation of our events. Whether it be securing sound permits, controlling the heavy crowds during the Holiday Tree Lighting, or, very importantly, clearing the street of illegally parked cars and making sure traffic is routed properly during the Conservancy’s Gracie Square Art Show, Detective Helms always has our backs.”

And so it goes. ☺



THE GO-TO GUYS Parks Department Supervisor and Manager, Steve DiGiovanni and John Heimmerle.



E. 86TH ST

BUILD IT AND THEY WILL COME... BIRDS,

As you stroll through Carl Schurz Park this spring or sit quietly on a bench, you will see new sights and hear new sounds in many of our gardens. Along with many public parks and private gardens, the Conservancy is adding biodiversity in plant material – more species native to New York City,

hardier plants especially. Native plants attract native birds and native pollinators that in turn attract native New Yorkers! While the Conservancy gardening committee cannot and would not want to totally transform the existing Park landscape, the gardeners are determined to introduce



Ilex opaca

This evergreen has spiky dark green leaves.

It is dioecious, so it requires male and female plants to produce berries. The fruit provides food for birds later in the summer.



Clethra alnifolia

White flowers in late summer are fragrant and attract bees, butterflies and hummingbirds.

In the fall the leaves turn yellow.

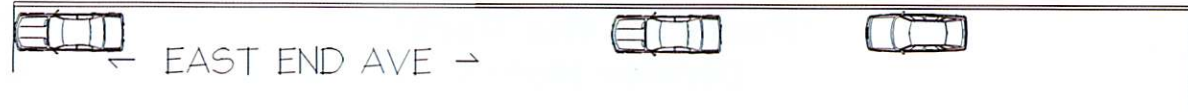
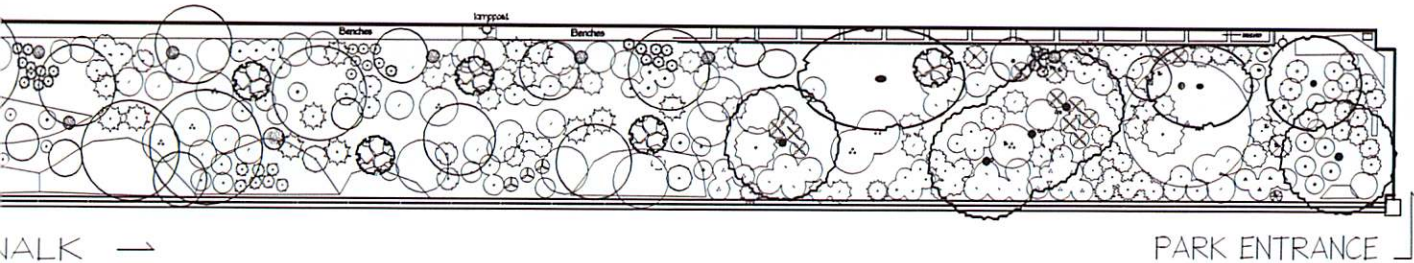


beautiful, useful biodiversity to all the gardens. Along with attracting pollinators, many of the shrubs and trees also bring bright berries, showy fall colors, wonderful aromas and interesting leaf textures to the Park.

To experience the most concentrated display of

ecological biodiversity, walk along Playground Walk from 84th to 86th Street and look west or sit on one of the benches and listen. For the last two years, **Banford Weissmann**, a certified Landscape Designer and Seasonal Gardener for the Conservancy, has transformed this berm from a


PLAYGROUND



BUTTERFLIES AND HUMMINGBIRDS


dull, almost lifeless shrub border, devoid of flowers and colors, to a lively hub of positive insect and avian energy. As described in PARK NOTES two years ago, Banford started with a 100-foot long section in 2014. The Conservancy immediately saw more and different birds and more

pollinators – butterflies, bees, moths, beetles – so in 2015 she was asked to extend the design to 86th Street. In 2016, she will continue to work around the perimeter of the Park, integrating much needed new shrubs and trees with existing plant material. Some of the native species






Viburnum acerifolium

White spring flower clusters attract butterflies. In the summer, the flowers evolve into dark blue berries that attract birds.




Leaves turn varying shades of reddish purple in the fall.






Symphoricarpos albus

The white-pink flowers in spring develop into unusual white berries that persist through the winter. The fruit attracts songbirds and game birds.



Leaves turn yellowish in the fall.



that have resided in the Park for decades are grey dogwoods (*Cornus racemosa*) that date from the 1930's, oak leaf hydrangeas (*Hydrangea quercifolia*) and the yews (*Taxus*) which line Park pathways. Some of the newer natives in the Park are shown here. The photos and descriptions

are taken from Banford's web site where you can also find a fun interactive design, which is especially appealing to children of all ages: www.banfordlandscapes.com/interactive%20map.html 📄

THANK YOU FOR YOUR GENEROUS SUPPORT

The Carl Schurz Park Conservancy is grateful to all those who made a contribution between January 1, 2015 and December 31, 2015. Without your vital support, our efforts at improving the park and offering annual events would be greatly diminished.

Individuals

\$75,000 to \$100,000

Pat and Peter Nadosy*

\$50,000 to \$74,999

Donald A. Pels Charitable Trust

\$25,000 to 49,999

Larry and Judy Howard
Anonymous (1)

\$15,000 to \$24,999

Joan Haffenreffer Bartsch and David Bartsch
Ora and Howard Smith

\$10,000 to \$14,999

Sandye Berger
Suzanne and Matt Donohoe
Edward and Caroline Hyman
Larry and Mary McCaffrey
Donald M. Roberts and Mary Gordon Roberts
Fiona and Eric Rudin
Lise Scott and D. Ronald Daniel
Carla and Roland Villacorta

\$5,000 to \$9,999

John and Alexandra Amorosi
The Brearley School
Sarah Beatty Buller and Mark Buller
The Chapin School
Stewart and Cornelia Clifford
Susan and Greg Danilow
Beth Rudin DeWoody
Robert F. Gossett, Jr.
David and Cari Grodner
Susan Heide
Lucia Keller and David Baum
Jane and Arthur Lane
Evie Muller
Louise Radin and

'Party on the Park' Dinner Hosts

LeeAnn and Jeffrey Black
Judy Donahue and Bruce Lafranchi
Dolly and Jack Geary
Antonia and Jim Gorton
Jamia Jasper and Edward Silverstein
Michelle Russell Johnson and Neil Johnson
Mr. and Mrs. Richard E. Salomon
Kazie Metzger and John Harvey
Pat and Peter Nadosy
Dottie and Marty Payson
Lisa Roumell and Mark Rosenthal
Cindy and Jake Scheinerman
Clare and Jerry Thomas

Party on the Park Cocktail Venue—The Brearley School

Leonard Kreynin
Mr. and Mrs. Richard E. Salomon*
Marvin and Mimi Sandler
Clare and Jerry Thomas*
Anonymous (1)

\$2,500 to \$4,999

Zahid Ahmed
Doug and Elena Atkin
George and Evelyn Benjamin
Brook and Roger Berlind
Christine Beshar
David A. and Carol E. Domina
Andrew Jaffe
Terry and Tom Lamb
Joseph and Barbara Lane
Christopher and Cathy Lawrence

Margaret Mellon
Hitchcock Foundation
Maureen Moreau
Barbara Nessim and Jules Demchick
Kenneth and Ellen Roman
Beth Schlansky
Eric and Erica Schwartz
Yogendra Shah
Aaron and Joanna Sirulnick
Ranjan and Chandrika Tandon
Mandy and Noel Volpe
Kathy Walsh and Gene Bernstein
Tere Wang

\$1,000 to \$2,499

Jessica and Joseph Ainsberg

Eric Altmann
Steena Auchincloss
Deborah Berke and Peter D. McCann, M.D.
Ann and Joel Berson
Maureen and Scott Beshar
Mark C. Binting
LeeAnn and Jeffrey Black*
Thomas and Marcia Borger
Susan and Donald Brant
Thia Breen and Laurie Dowley
Pat and Stanley Brilliant
Nancy and Greg Brown
Theresa Burton and John Sprague
Lisa and Dick Cashin
Mario and Carolyn Cibelli
Peter and Faith Coolidge
Kenny and Alex Creed
Brenda and Tom Curnin
Kirk and Peggy Davenport
Degnan Family Foundation
Richard and Francesca Diamond
John and Jodie Eastman
Nicholas and Emily Elliot
Joseph and Barbara Ellis
Robert and Margaret Fagenson
Thomas and Miriam Farmakis
Susan Ferris
Joseph S. Fichera
Florence V. Burden Foundation
Celeste Ford and Fredric Leopold
Ashley Garrett and Alan Jones
Ellen Gendler and James Salik
Ted and Hilary Giuliano
Sandra Gluck
John R. Gordon

Richard E. and Patricia
Dunn Grey
Carol J. Haley
Barney and Julia Hallingby
Ellen K. Halsted
Troy Halterman
Fernand and Patricia Hayot
Dan and Nancy Hebert
Mary Henry and
Howie Rubin
Karen and Jeff Hughes
Richard and Patricia Jay
Pamela Jones
Amy Kuhn and Stuart Rosow
Marjorie and Sol Lesch
Lawrence E. Lewis, III and
Alberto Gaitan, M.D.
Ulises and Christina Liceaga
Roger and Florence Liddell
Carl and Nancy Lieberman
James and Amira Luikart
Caryn and Jim Magid
Meghan and Trevor Magyar
Leonard Majzlin and
Carol Hall
Chris and Claire Mann
Reina Marin and
Emilio Bassini
Maureen McAllister and
Charles Platt
Frank and Francine Murphy
Whitney and Clarke Murphy
The Nakshian Family
Robert and Anita Nelson
Elizabeth Nesvold
Virginia and Ted Niedermayer
Claudia and Gunnar Overstrom
Patty and Peter Paine
Christine and Rodman Patton
Barry and Liz Pearson
Susan Porter
Yvonne S. Quinn
Victoria and Donald Rose
Amy and William Rosenblum
Julie and Rick Ruvkun
Wendy and Ian Sacks
Scott and Pam Schafler
Jeffrey and Cari Schnipper
Michael Schultz
Ira and Jody Schwartz
Philippe Seeman
Marilyn Seifert
Peggy and Crossan Seybolt
Elizabeth Shea and Ed Sisk
Bill and Fay Shutzer
Anne P. Sidamon-Eristoff

Moses Silverman and
Betty Robbins
Rob and Cornelia Spring
Jean Stein
Louise H. Stephaich
Sandy and Dan Stoller
Begum and Will Taft
Anne Alexis Cote Taylor
John and Louisa Trough
Monica and Andrew
Vogelstein
Stacey and Gregg Weinstein
Marc and Giulia Weisman
Nancy Young and Paul Ford
Salvatore J. Zizza

Mary Salinger Glucksman
Molly and David Helfet
John and Felicia Hendrix
Dr. Russel Huang
Walter and Judith Hunt
Karen and Peter Jakes
Ali and Peter Jennison
Ellen Kern
Janice Kim and
Sammy Suzuki
Marc E. Klahr
Anthony and Laura Klarman
Steven Klugman and
Mary Faucher
Joel Kurtzberg

Emily Snider
Brenda Neubauer Straus
Margaret D. Sullivan
Mary and David Tobin
Eugen and Roxana Vartolomei
Ray and Susan Volpe
Mary Kay Vyskocil
Carreen and Richard Wade
Christopher Walling
Anonymous (2)

\$250 to \$499

Rebecca and Alberto Acosta
Roberta Adams
Brian Albrecht
Karen Altfest
Naomi and James Altschul
Leo and Nicole Arnaboldi
Eric Bederman
Gary and Shari Belitz
Dr. Alan Bender
Mitchell and Ronda Benson
Loraine Boyle
Howard and Ellen Brecher
Thomas and Inbal Brener
Jim and Joan Burke
Ruth Anna Carlson and
Albert Leonetti
Mary Claire and Chris Lagno
Ivy and David Cohen
Joshua Cohen
Jan Colucci
Rosanne Cooper
Philip Cusick
Margaret D'Albert
Messrs. Frederick Di Maio and
Thomas Brian
John and Margaret Edsall
Sheila and Mark Farina
Audrey Ferraro
Sandra Lotz Fisher
Judith Fox and David Loomar
Sarah Gould and
David Steinhardt
Morton E. Grosz
Anne and James Hanbury
Lauren Heinz
Nina Henderson
Naftali Holtz
Risa Honig
The Honorable Robert
Horowitz and Mrs. Marcia
Horowitz
Bonnie L. Howard and
Charles M. Charrow
Dara Hunt

We gratefully thank the Estate
of Donald E. Pels for the generous
bequest to the Carl Schurz Park
Conservancy.

\$500 to \$999

Ellen Asher
Terri Asiel
Marion Bachrach and
Jonathan Siegfried
Stan and Susan W. Bernstein
Fritz Beshar and
Peter Lehner
Susan Berliner Bressman
Nancy Bronstein and
Joseph Sponholz
Gretchen Buchenholz
Peter Buffington
Thomas J. Campbell
Dr. Michela Catalano and
Dr. Stephen Baum
Rhoda J. Cohen
Jeff and Connie Collier
Bettina and Brian Decker
Eugene DePasquale and
Agatha Nody
Carla and Frank DeSimone
Judy Donahue and
Bruce Lafranchi*
Stanley J. Dusek
Thomas and Claudia Eff
Linda Fairstein and
Michael Goldberg
Jose W. Fernandez
Sharon Flescher
Colleen Frey
Lawrence and Alice Friedland

Rhona Landau and
Steven Weissman
Ira and Ruth Langer
Robert and Cornelia
Marakovits
Jeanne and Joseph Mazzetti
Stephen and Carolyn
McCandless
Steve and Dorian Mecir
Phebe Miller
Susan Milsom
Nancy and Charles Wall
Family Foundation Fund
Thomas and Lisa Newell
David and Melanie Niemiec
Stuart Orsher and
Gladys George
Michael and Elena Patterson
Wilhelm Pfiffner
Anthony and Susana
Piscitiello
Lee and Nick Potter
Nadine and Matt Rufrano
Evan Sacks
Rosemary Sagar
Ruth Calvin Scharf
Xiomara and Charlie Scheidt
Elizabeth Schriever and
John Brandow
Kathie Simmons
Virginia B. Slaughter
Margaret J. Smith



ROBERT ENGLEBRIGHT

*In addition to their gifts to the Conservancy, these individuals generously hosted 'Party on the Park' dinners in their homes.

Businesses

BestClass, Inc.
Biscuits and Bath
Calling All Pets
Dorian's Seafood Market
Eric Landgraf Florist
Freshpet
Terry Lamb/Halstead Realty
Ottomanelli Brothers
ParkEast Animal Hospital
Ruby and Jack's Doggy Shack
Stella and Chewy's
Yura
VCA Animal Hospitals
Weruva

Schools

\$5000 and above

The Brearley School
The Chapin School

Sponsors of Summer Events

BestClass, Inc.
Dorian's Seafood Market
Terry Lamb/Halstead Realty
Ottomanelli Brothers
Yura

A very special thank you to: Biscuits and Bath for their donation of Mutt Mitts for our dog runs.

The Chapin School for hosting our annual Volunteer Appreciation Day.

Insomnia Cookies for their donation of cookies for our Sunset Films and Mulchfest events.

Yura for their donation of breakfast for the Gracie Square Art Show and goodies at the Sunset Film Festival.

Anthony and Joan Japha
Lisa and Paul Jeruchimowitz
Sofija Jovic and
Emilian Djindjic
Thomas and Simi Kahn
Edith and Hamilton Kean
Paula Klein
Arnold and Nina Kling
Vickie Germain Kobak and
Jonathan Kobak
Philip Krause
Rhonda Kruman
Vijaya Kumar
Jennifer and Trey Laird
Alfred and Carol Landess
Ralph and Nina Levene
Peter Levenson and
Pamela Sweeney
Adam Levien
Susan Lewis and
Scott Brodie
Robert and Penny Lieberberg
Julie A. Luttinger and
Charlie Graves
Christine T. MacLaughlin
Paul and Annette Marcus
Mr. Peter Matson and
Ms. Susan Colgan
Pearl T. Maxim
David W. Mayo
Mr. and Mrs. Lance Meyerowich

Paul Milmed and
Debra Anisman
Katherine Milot
Mendelle and Martin Milston
Charlie and Sally Morgan
Janet Nagel
Alexander and Lynne Neave
David Neft
Janice and Yoji Nimura
Laura and Peter Onghena
Paula Sarnoff Oreck
Jason Parkin
Carol and Nicholas Paumgarten
Odette Petersen
Coles H. Phinzy, Jr.
Jill Pliskin and
John Steinberg
David Pollack
Daniel L. Rabinowitz and
Ann F. Thomas
Julie E. Rahrig
Mark Reilly
Judith Rich
Frederick Rohn and
Frances Lippa
Loli and Simon Roosevelt
Ellen Rosen
Stephen Sachman and
Alexia Quadrani Sachman
Martin Satz
Barbara Sawitsky

Sue Schwartz
Robert and Katerina Shaw
Anita F. Shulman
Jeffrey and Heidi Siegel
Diane Spalter
Susan W. Stachelberg
Helen Studley
David and Melite Sweet
Ellen and Bill Taubman
Liz Tominey and Jeff Reed
Dr. Bonnie Usliane and
Rick Lepsinger
Jonathan Vapnek
Jill Wallach and
Stacey Lynn Berliner
Dianne Weisheit-Olenick and
Louis Olenick
Mary Wheeler
David D. Williams
Anonymous (3)

And our thanks to over 470 contributors whose donations of \$1 to \$249 totaled more than \$38,000.

A Look Back at the 'Party on the Park' 2010-2015 Honor Roll

The enormous success of our wonderful annual benefit is due in large part to the fifty-two generous and gracious dinner hosts, the five extraordinary cocktail party hosts and the six enthusiastic, hard working co-chairs.

We are delighted to present our honor roll of these neighbors.

Dinner Hosts

Miguel and Vivian Haime Barg
Deborah Berke and
Peter D. McCann, M.D.
Andre Bishop and
Peter Manning**
LeeAnn and Jeffrey Black**
Susan and Richard Braddock
John and Elena Brim
Sarah Beatty Buller and
Mark Buller
Bob and Julie Daum
Richard and
Francesca Diamond
Michael and Beth Fascitelli**
Ashley Garrett and Alan Jones
Dolly and Jack Geary***
Antonia and Jim Gorton**
Barney and Julia Hallingby
Larry and Judy Howard**
Edward and Caroline Hyman**
Jamia Jasper and
Edward Silverstein
Richard and Patricia Jay
Michelle Russell Johnson and
Neil Johnson
Edith and Hamilton Kean**
Anthony and Laura Klarman
Judy Donahue and
Bruce Lafranchi**
Jennifer and Trey Laird**
Mr. and Mrs. Richard E.
Salomon***
Christopher and
Cathy Lawrence
Nancy and Carl Lieberman
Ann Lozman and Jay Harris
Chris and Claire Mann
Larry and Mary McCaffrey**
Dee and Colin McKechnie
Kazie Metzger and
John Harvey***
Whitney and Clarke Murphy
Pat and Peter Nadosy
Anita and Robert Nelson
Dottie and Marty Payson

Kenneth and Ellen Roman
Lisa Roumell and
Mark Rosenthal**
Wendy and Ian Sacks
Marvin and Mimi Sandler
Shilpa and Arvind Sanger**
Cindy and Jake Scheinerman
Lisa and Michael Schultz
Ira and Jody Schwartz
Bill and Fay Shutzer
Rob and Cornelia Spring
Nancy and Mitchell Steir
Lenard and Fern Tessler**
Clare and Jerry Thomas
Carla and Roland Villacorta**
Kathy Walsh and
Gene Bernstein**
Alan and Barbara Washkowitz
Marc and Giulia Weisman

Hosted 2 Parties *Hosted 3 Parties

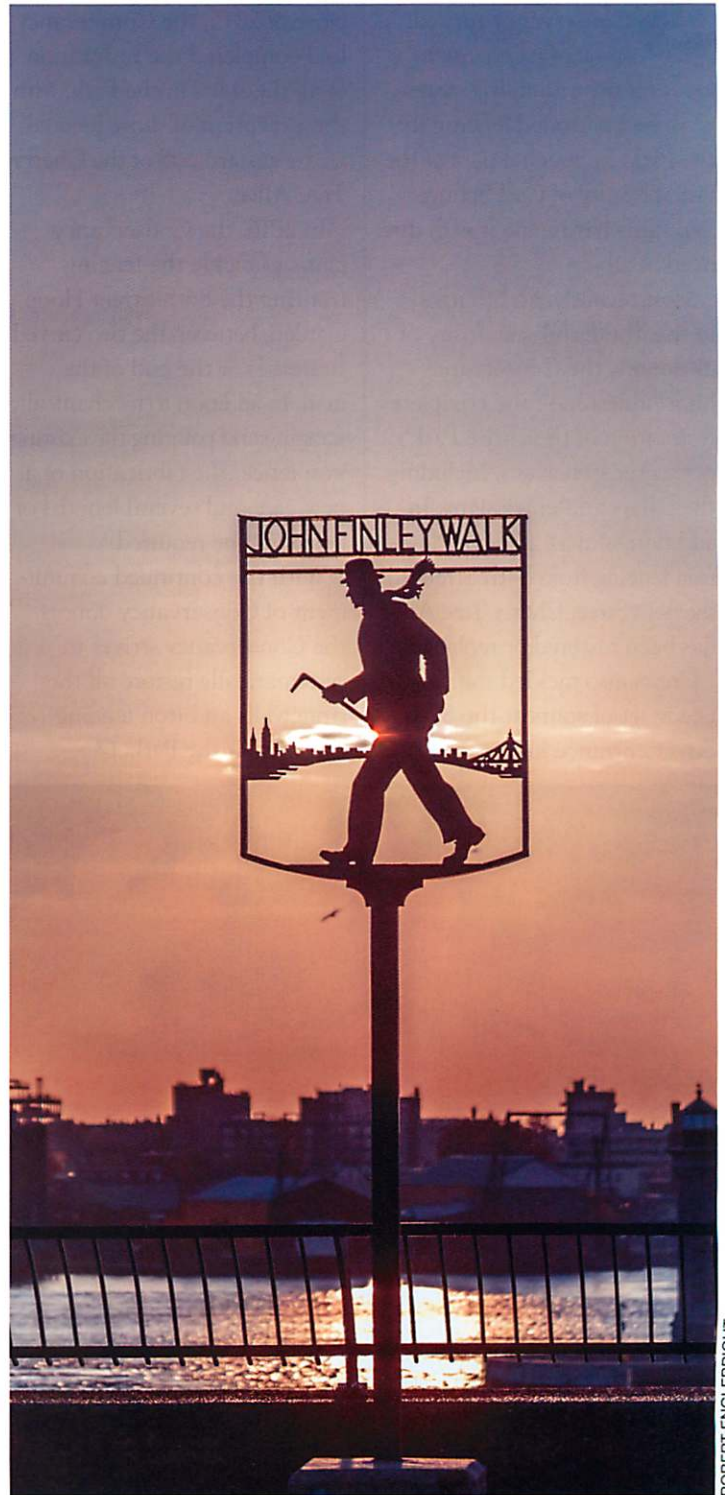
Cocktail Party Hosts

The Brearley School
The Chapin School
Gracie Mansion
Eric and Erica Schwartz
Lisa and Orin Wilf

Co-Chairs

2010 Fern Tessler
Clare Thomas
2011 Clare Thomas
Clinton Standart
2012 Clinton Standart
Louisa Troubh
2013 Louisa Troubh
Maureen McAllister
2014 Maureen McAllister
Monica Vogelstein
2015 Monica Vogelstein
Kathy Walsh

*The sun rises on another
beautiful day in Carl Schurz Park.*



ROBERT ENGBRIGHT

STONES AND FENCES AND STAIRS... OH MY!

Several years ago, the Conservancy turned some of its energy to focus on the crumbling stonework and corroded fencing in the Park. So much a part of the visual beauty of Carl Schurz Park, this hardscape was in dire need of repair.

Most recently, and thanks to the wonderful generosity of its donors, the Conservancy hit a "milestone": the complete restoration of the entire Park's perimeter stonewalls, including the pillars and entry signs. In addition, almost all of the low iron fencing from 84th Street to the 86th Street Cherry Tree Allée has been restored or replaced.

Crews also tackled the very needy set of stairs at the 89th Street entrance just north of

Gracie Mansion. In fact, by the close of 2015, the Conservancy had completed the restoration of all the stairs in the Park, with the exception of those located at the eastern end of the Cherry Tree Allée.

In 2016, the Conservancy plans to tackle the fencing fronting the 86th Street Hoop Garden, between the two curved staircases at the end of the mall. In addition to mechanically scraping and painting the existing iron fence, the fabrication of a new gate and several lengths of fence will be required.

With the continued commitment of Conservancy donors, the Conservancy strives to systematically restore all the stonewalls and iron fencing throughout the Park. ☑



DAVID WILLIAMS

MULCHFEST MUCH GOOD!: EVERGREENS BRING NEW LIFE

It wasn't an old fashioned barn-raising, but it could have been. On the second weekend of January 2016, the NYC Department of Parks held its annual Mulchfest. This eco-friendly event attracted over 70 neighborhood volunteers who came out to help Parks and the Carl Schurz Park Conservancy transform thousands of Christmas trees into mulch. Volunteers included students and parents from Town School and Stuyvesant High. A rough Conservancy tally estimated that approximately 1,500 trees were saved from landfill! The resulting nine truck-loads of mulch were used in Carl Schurz Park. In addition, Trees New York distributed some of the fragrant mulch to 46 needy street trees in the neighborhood. Just another way in which working together benefits us all. ☑

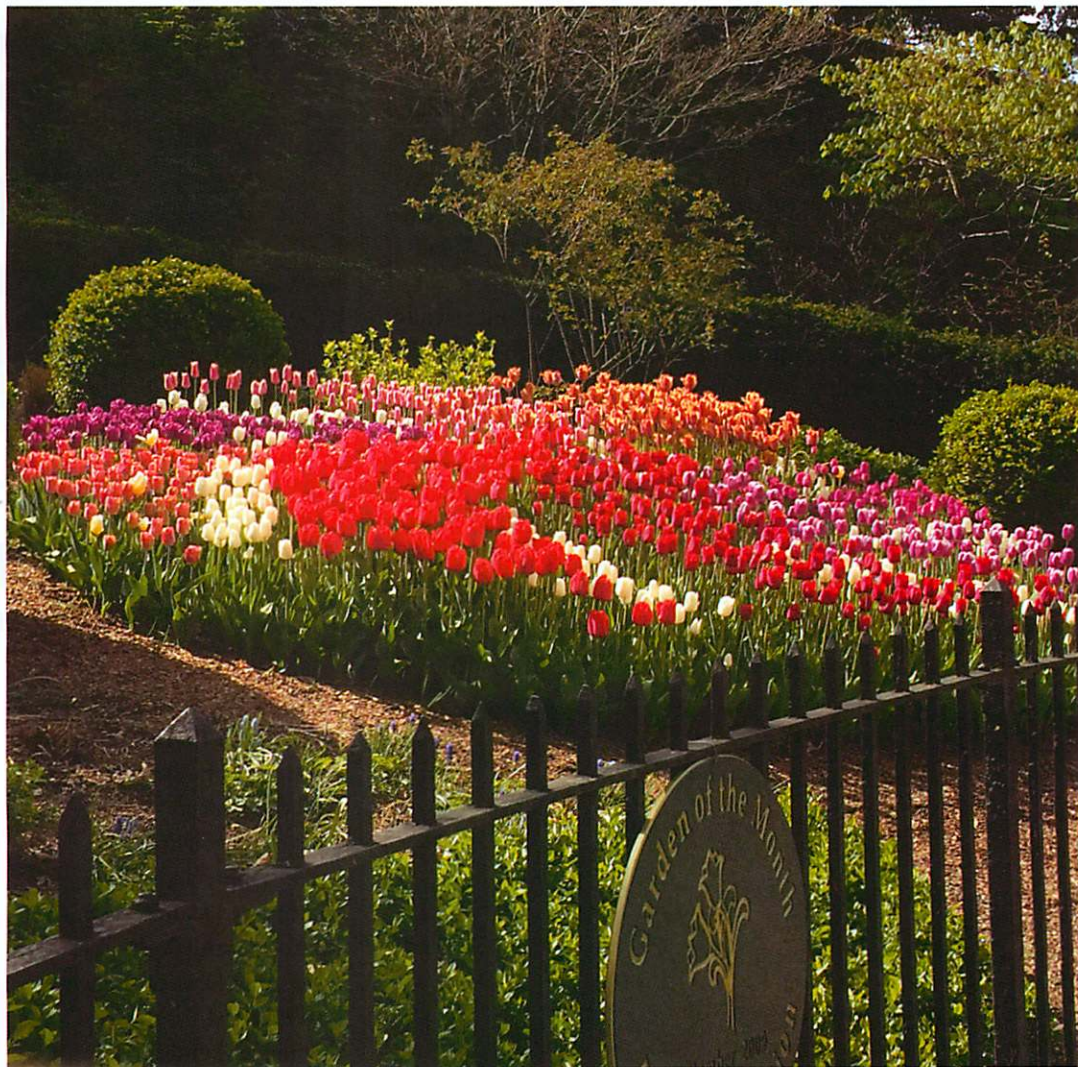


JUDY HOWARD

ELEVATING THE HORTICULTURAL CONVERSATION IN THE PARK: KUDOS TO THE GARDENING VOLUNTEERS!

Carl Schurz Park and the Carl Schurz Park Conservancy benefit tremendously from the CSPC's outstanding volunteer gardening program. Started in 2002 by **Judy Howard** and **Susan Bernstein**, in conjunction with the then newly appointed NYC Parks Department Gardener, **John Tweddle**, the monthly Saturday volunteer days and the Peter Pan Thursday mornings are now well established traditions. This program, which is managed by the CSPC Gardening Committee and overseen by **Jill Byatt**, brings in hundreds of volunteers who work thousands of hours to help maintain and improve the landscape of our Park.

Along the way, the Conservancy created the opportunity for experienced and talented individual gardeners to tend



JUDY HOWARD



DAVID WILLIAMS

garden zones in the Park. The Zone Gardening program, coordinated by **Dianne Olenick**, has grown steadily and, at the beginning of 2016, boasted

twenty-two gardeners. Five of the twenty-two have tended their gardens since 2004. The smallest garden measures four feet by eight feet; the largest garden, the Peter Pan Garden, is about half an acre and is managed by **Pat Nadosy**, with the help of a committed group of 'Peter Pan irregulars'. Each Zone Garden is identified by a sign.

A favorite neighborhood event is the Conservancy's

annual spring Plant 'Sale', to be held this year on Saturday, May 7th. Individual Zone Gardeners select annuals from the Beds and Borders catalogue and submit their lists to the Plant 'Sale' Committee run by **Ellen Halsted**. In the ten years since its inception, proceeds from donations to 'purchase' plants have covered the cost of annuals for the entire Park.

The Zone Gardeners are a

formidable force in the maintenance of the Conservancy's numerous garden beds. As you can see on any stroll through the Park, they are also a creative force, selecting beautiful plants and designing splendid, often exuberant, plant combinations. The Conservancy is proud to say that it has one of the most robust volunteer gardening programs in the City. With the most talented gardeners. 🌱

DAVID D. WILLIAMS, FORMER CSPC EXECUTIVE DIRECTOR, RETAINED AS CONSULTANT

Prior to assuming the role as the first Carl Schurz Park Conservancy Executive Director in 2006, David Williams served as a member of the Board of Directors, including being its Chair from 2000 to 2006. Taking his cue from the non-profit's former President and longtime community Parks advocate, **Laura Mayer**, David oversaw the group's dynamic progress and championed its inclusive community role.

In January of this year, David signed on as a consultant to the Conservancy, taking on a number of responsibilities that include a variety of written, online and fundraising communications, including the organization's annual newsletter, PARK NOTES, which he has researched and written for a number of years.

"From our first \$1.00 donor in 1978, the Conservancy has gone step-by-step to reach its current prominence on the Upper East Side," David writes. "I have been fortunate to work with a group of extraordinary neighbors who not only 'get' how important financial and volunteer commitment are to an organization like this, but also ENJOY what they do to make the Park a better place." ☞



DAVID WILLIAMS

Behold!: the 2016 official VAD floral takeaway: the primrose (*Primula vulgaris*. Really.)



DAVID WILLIAMS

Jump starting 2016: the Conservancy feeds and fetes its volunteers.

BEFORE THE FIRST CROCUS... THE "VAD"!

It quickly crept into the lexicon of the corps of Conservancy volunteers, the staff, the Board. And the budget.

It's the acronym for the Volunteer Appreciation Day. The "VAD". And, after the first one or two monthly Volunteer Gardening Days of the winter ("VOLGARD"), the VAD is the first real enterprise-wide event to poke its head up above the cold and grey of late winter.

Held each year at the Chapin School, the luncheon affords the Conservancy the opportunity to fete and salute its volunteer ranks. A jolly, casual two-hour catered affair, the VAD is also an early-bird chance for the various volunteer groups to get together amongst themselves, and their colleagues from other volunteer pursuits.

Each year, Parks Department

representatives and the community's elected officials join in the salute to the Conservancy volunteers. And the Conservancy itself. Held this year on Saturday, March 5, Conservancy Board Chair, **Judy Howard**, welcomed a number of officials to the podium. Each one a proven – and proving!! – celebrant of the things the Conservancy does so well.

"We were thrilled to have U.S. Representative **Carolyn Maloney**, State Assembly Member **Rebecca Seawright** and Council Member **Ben Kallos** visit and say some very welcome and appreciated words about our shared love, Carl Schurz Park," said Ms. Howard.

As always, each volunteer was sent on his or her way with a potted plant. This year, 'twas the primrose. ☞ (See photo, left.)

CARL SCHURZ PARK CONSERVANCY EVENT CALENDAR!

FLOWERS!



JUDY HOWARD

Saturday, May 7
9:30 a.m. to 4:30 p.m.
PLANT SALE
East 86th St. and
East End Ave.

KIDS!



Tuesdays,
August 9, 16, 23 & 30
4:00 p.m. to 4:30 p.m.
SUMMER
SANDBOX MUSIC!
In the playground.

Saturday & Sunday,
October 1 & 2
11:00 a.m. to 1:00 p.m.
MoMA IN THE
PLAYGROUND
Held during the
GRACIE SQUARE ART
SHOW

Saturday, October 8
11:00 a.m. to 1:00 p.m.
HARVEST FESTIVAL
(Rain date October 9)

TUNES!



SUMMER SOUNDS 2016
Open air concerts on the
John Finley Walk at the
top of the East 86th Street
staircase.

Tuesday, June 21
4:00-7:00 p.m.

MAKE MUSIC NEW YORK
City-wide concert series.
Celebrate the first day of
summer! A collaboration with
Manhattan Borough
President, Gale Brewer

Wednesday, July 13
FRENCH COOKING
BLUES BAND

Wednesday, July 20
STEVE SHAIMAN and
SWINGTIME BIG BAND
Their SEVENTH appearance
at SUMMER SOUNDS!!

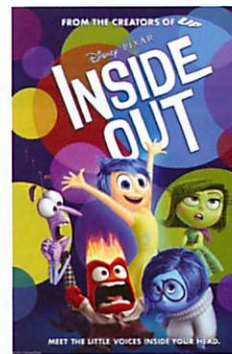
Except for the Tuesday,
June 21 event, performances
are 7:00 p.m. to 8:30 p.m.
and are held on the
John Finley Walk, atop the
East 86th Street mall
overlooking the East River
in Carl Schurz Park. Limited
seating available.

FLICS!

**SUNSET FILM
FESTIVAL 2016**
Why ask for the moon
when there are movies
under the stars in
Carl Schurz Park?

"Now THAT'S teamwork!"
Working together to get
the job done.

Tuesday, July 26
The Oscar-winning
INSIDE OUT



Tuesday, August 9
George Clooney, Matt
Damon, Julia Roberts... and
EVERYBODY else... in
OCEAN'S ELEVEN



Movies start at 8:30 p.m.
in the Basketball/Hockey
Courts, Gracie Square and
John Finley Walk.

ART!



Saturday & Sunday,
October 1 & 2
10:00 a.m. to 5:00 p.m.
East End Avenue from
East 84th St. to East 88th St.
www.graciesquareartshow.info
(Rain or shine)

WOOF!



Sunday, October 16
1:00 p.m. to 3:00 p.m.
HALLOWEEN HOWL plus
HEALTHY HOUND FAIR
The hockey and basketball
courts, Gracie Square and
John Finley Walk
(Rain date October 23)

A PARTRIDGE IN A PEAR TREE



Sunday, December 4
5:00 to 6:00 p.m.
THE ANNUAL HOLIDAY
TREE LIGHTING
East 86th Street and
East End Avenue



DAVID WILLIAMS

What is this?
See page 2



JUDY HOWARD

**Mission Statement
of The Carl Schurz
Park Conservancy**

The mission of the Carl Schurz Park Conservancy is to restore and beautify Carl Schurz Park, complementing the efforts of the New York City Department of Parks and Recreation. Our goal is to enhance the public's enjoyment and involvement in the Park. The Conservancy organizes volunteers to execute its projects and sponsors community events that are open to all.

Carl Schurz Park Conservancy
1483 York Avenue #20523
New York, NY 10075-8819
212.459.4455

PARK NOTES
Editor & Writer
David D. Williams

Contributors
Judy Howard
Pat Nadosy
Clare Thomas

Design
Barbara Lee Chapman

The Carl Schurz Park Conservancy is a 501 (c) 3 organization.
Printed on recycled coated text with soy based inks
Ecofriendly Printer, a Greg Barber Company



**BOARD OF
DIRECTORS**

Judy Howard
Chair
Lisa Latcholia
Secretary
Larry McCaffrey
Vice Chair
Pat Nadosy
Vice Chair
Louise Radin
Treasurer

Susan Danilow
Susan Heide
Claire Mann
Nina Mortellito
Marvin Sandler
Ranjan Tandon
Clare Thomas
Roland Villacorta

Patrick McCluskey
Director of Operations

Ann Meschery
Director of In-Park Events

Banford Weissmann
Master Seasonal Gardener

Erin Kennedy
Seasonal Gardener

William Stannard
Assistant Seasonal Gardener