

PARK NOTES

SPRING 2015

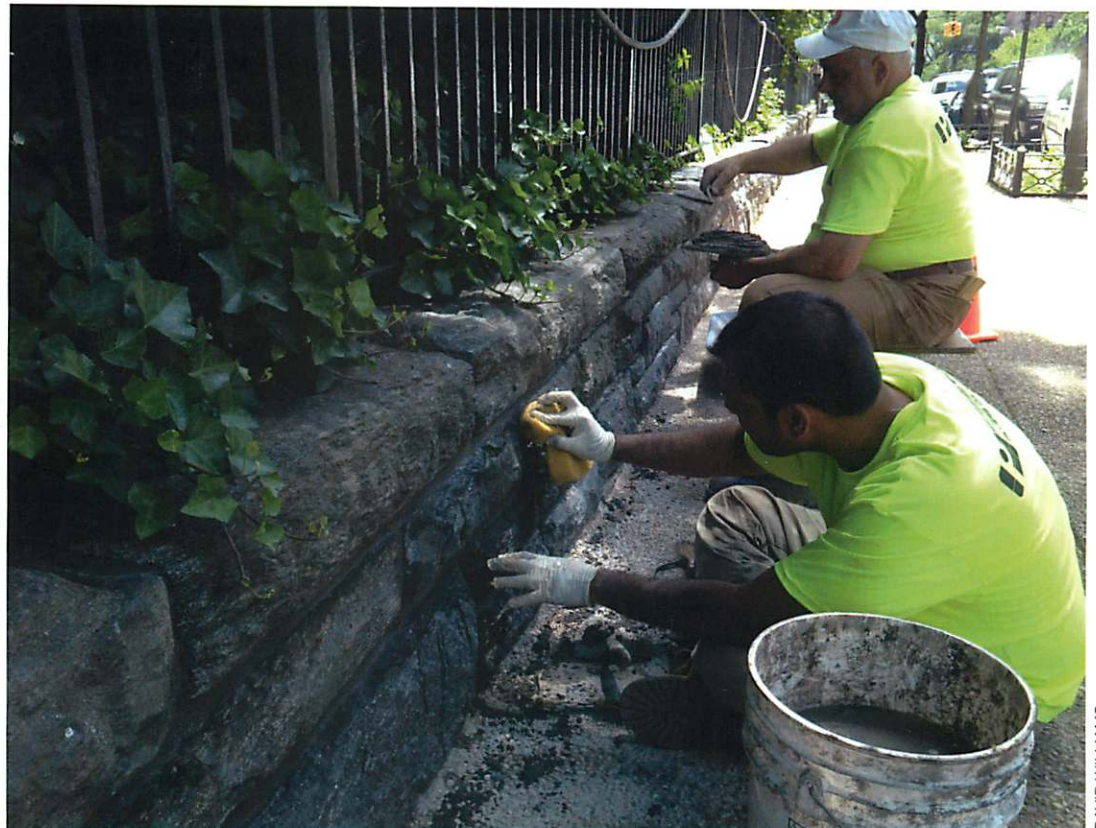
BUILDING FOR A LASTING CARL SCHURZ PARK, v.2.0

In the 2013 edition of *Park Notes*, we reported on the launch of a new phase of Conservancy investment in the Park. In the lead article, titled *Building for a Lasting Carl Schurz Park: Below and Above Ground*, we mapped out a brand new, ambitious initiative for the Conservancy. Having assessed the physical condition of the Park, the Conservancy Board and its committees began a catalog of needs, in priority. A new activist agenda was forged.

Two years on, there is quite a story to tell.

In forming a new infrastructure committee, the “i-Team”, the Conservancy found a core group of able volunteers ready to take on the task of assessing and surveying the hardscape of our Park. The committee looked at crumbling stonework, overflowing garbage cans, corroded iron fencing, investigated high-tech trash compactors, interviewed numerous contractors and, in 2014, began mapping and numbering the 700+ Park benches.

Repointing the neediest stone stairways was first on the list. The southern stairs leading down to the Peter Pan garden, the enormous stairs leading to the Esplanade at 86th Street and both western-most stairs at the East 86th Street and East



Workers repointing the Park stonework along East End Avenue, now completed from Gracie Square to East 87th Street.

End Avenue entrance to the Park were tackled. Over the next two years, the stone retaining wall on East End Avenue from 84th to 87th Streets was repointed as were all entry pillars to the Park. This past summer brand new hand carved, historically accurate, limestone Carl Schurz Park signs were placed in the newly refurbished pillars. (See article on page 2)

Another big project was the iron fencing at the southern end of the Park. Horribly cor-

roded from years of dog urine, the fencing, starting at the East 84th Street entrance, running the length of Polly Gordon Walk to the Esplanade and the fencing running north to 86th Street, was completely restored. Panels that could be salvaged were scraped and painted. Those that were damaged beyond repair were replaced with brand new panels. To protect the garden beds and enhance the areas, new pipe rail fencing was installed by the south entrance

to the playground and by the entrance to the Small Dog Run.

Both of these long-range projects are to date the largest capital projects funded and overseen by the Conservancy. “Yes, we’ve funded major horticultural installations in the Park and, over the years, we have partnered with the City in critical improvements to the playground and the dog runs,” said Executive Director David Williams. “We fund so many facets of the *continued on page 4*

EXECUTIVE DIRECTOR'S LETTER

en-gage \in-gaj, en-\ Middle English, from Anglo-French *engager*, from *en-*+*gage* pledge, *gage* First Known Use: 15th century v. to pledge oneself

The Carl Schurz Park Conservancy, like its partners across our City, got its start around a dining room table. Or was it a coffee table? Either way, it began the way all good community ideas begin: with a few tireless volunteers who band together, roll up their sleeves and dig in to solve a problem. In their case, it was the shabby state of the gardens and playgrounds in Carl Schurz Park.

And so, the volunteers engaged. And, perhaps without knowing where it would all lead, they tacitly pledged to do whatever they could, with whatever talents and resources they could bring to bear, to save a community resource and better it.

They also had fun.

These are the two things that continue to sustain the Carl Schurz Park Conservancy in the execution of its mission: engagement. And fun.

Some forty-odd years after those early meetings, the volunteer base of the Conservancy has grown significantly. Whether they dig and rake and prune, meet and greet, plan the many Conservancy events, or work on the Conservancy budget and sign the checks, it's volunteers who float the boat. On the ground or around a board meeting table, the men, women and, sometimes, kids who give of their time in this way do it with gusto because, well, it's fun and rewarding.

During my time with the group I have seen it attract talented people, each one somehow finding a role to play, bringing the right skill at exactly the right time. Miraculous!

Which is not to say that it has always been easy. Cleaning and raking the dog run, a Conservancy responsibility, had its dark days. When you could count the number of people who showed up to help on one hand. Now, dozens of hearty souls pitch in throughout the year, but especially during the two yearly cleanups.

Citizen care of the Park has only gotten better and better.

Carl Schurz Park is fortunate to have this engaged community of souls who generously give of their time and skills for the common good. As I am writing this, we are preparing for our annual Volunteer Appreciation Day, a party where the Conservancy fetes the Tried and True, our corps of hearty volunteers.

And so, a toast to our volunteers, each and every one.



David D. Williams
Executive Director



DAN NELKEN

THESE TIMES OF THE SIGNS!

Replacing the woebegone signs at the five East End entryways to Carl Schurz Park had long been on the Conservancy's list of hardscape improvements. Thanks to several donors, whose legacies continue to enrich the Park, the Conservancy was able to forge ahead in 2014 and create new, historically accurate, signposts for Park visitors.

Like anything the Conservancy tackles, it was imperative that the new signs reflect the aesthetic care and architectural integrity of the Park's original designers and landscapers.

The Conservancy turned to B & H Art-in-Architecture, Ltd., specialists in the restoration of architectural landmark

and historical structures. B & H's reputation for meticulous and historically accurate handiwork has earned it commissions from the New York Public Library, Saint Patrick's Cathedral, and both the Metropolitan Museum and the Museum of Natural History, to name just a few.

Undoubtedly, Carl Schurz himself would be pleased. 📷



PATRICK MCCLUSKEY JOINS THE CONSERVANCY STAFF



DAN NELKEN

Hitting the ground running, Patrick McCluskey assumed the position of Administrative Assistant for the Carl Schurz Park Conservancy in December, 2014, and has since been promoted to Director of Operations. Joining the Conservancy from Choi & Burns, LLC, a financial services company, Patrick reports to the

Executive Director of the Conservancy, and works extensively with the organization's Board of Directors and its many committees and volunteers.

His professional background includes training and experience in global mobility, international human resources, international taxation, human resource policy creation and administration, and organizational management.

On joining the staff of the Conservancy Patrick said, "I am thrilled to be working with this great community of people. The devotion the Carl Schurz Park Conservancy members have shown has made the Park the highlight of the neighborhood. I am excited to join in the efforts to maintain and to continue improving this treasure." 📷

PEGGY ANNE LYMAN: “PAN”-VOLUNTEER

On one of those happily historical single digit days in February, Peggy Ann Lyman sat down with Executive Director David Williams to talk a little about volunteering for the Carl Schurz Park Conservancy.

Peggy is one of the Conservancy's PAN-volunteers: her volunteer engagements span a number of committees. She is a keeper!!

DW: Tell us a little about your background, Peggy.

PAL: I moved to New York when I was a teenager. And I went to the Fashion Institute of America. I worked for Bluebell Wrangler Blue Jeans and then went to work for Revlon where I got my sales training. Finally, I became a manufacturer's rep in the gift business.

I've lived in the neighborhood for 40 years. I started on 85th Street and First, then 81st and East End. I married the man next door and we were married for fifteen years before he passed away from lung cancer. Then I bought my apartment at 83rd and York and have been there ever since. The closer I can get to the Park the better!!

DW: It's a real draw for people, the Park.



Peggy Anne Lyman

PAL: It 's such a wonderful place. No matter what time of the year, what time of the day there is always something to make you happy. Even when I drive by... whenever I have the car out I drive by. Always. I love it!

DW: How did we get so lucky to have someone like you volunteer?

PAL: I was out for a walk and I saw a poster for Volunteer Gardening. Now I LOVE gardening and I missed it. Later, I met Ann Meschery at the

Volunteer Appreciation Day (VAD) and we started talking about other things. And I said I'd love to do this, and I'd love to do that! It was about four years ago, I think. She was SO nice and so outgoing – I was a little apprehensive since I'd never been to this event and didn't know anyone. It turned out to be such a blessing and volunteering for the Conservancy has enriched my life tremendously.

DW: You are like our “pan-volunteer”, you volunteer for

pretty much everything we offer in the Park.

PAL: Started with gardening, then I added the Art show and then the HOWL and then of course the Tree Lighting. And the concerts and the movies.

DW: So, when you went to your first VAD you knew no one. But now, you have certainly made friends through your volunteering, right?

PAL: YES! Now, there are four people I met at the VAD and we go out to dinner, and we speak to each other every day. It's been wonderful.

DW: People volunteer for something because they like it, and it makes them feel good. What is it about the Park that makes you feel good?

PAL: The Park makes me feel happy and secure and content. And I remember when my cat, Tuxedo, had diabetes and when the vet told me, I went to sit under the cherry trees and cried.

And it was just so nice to have those cherry trees there. And when I walk through the Park I recall, as a volunteer, we did THAT and we did THIS and I raked THAT lawn! And I took care of THOSE drains... I don't like leaves in the drain. I don't! 🍷



ROBERT ENGLEBRIGHT

continued from page 1

upkeep and beautification of Carl Schurz Park that it almost becomes business as usual.

“With the stonework, fencing, bench mapping and hand-carved signage we moved Conservancy involvement to a totally new level,” he added.

Board Member and i-Team major player, **Clare Thomas**, notes “It’s important for us to maintain the hardscape of our Park because these are the ‘bones’ of the Park. The stonework and fencing demarcate the undulating landscape and provide the unique character and visual beauty that makes our Park so alluring.”

Keeping track of the many benches in the Park was another challenge Conservancy volunteers took on. Almost every month the Conservancy receives a generous gift of a new bench plaque to be installed in our Park.

“I hear it’s been like herding cats, trying to process, track and care for all of the bench plaques in the Park,” said Director of Operations, **Patrick McCluskey**, who joined the staff of the

Conservancy in December.

Currently working with a new bench plaque mapping system created by one of the Conservancy interns, the office will be able to manage the ordering, design, installation and condition of each and every plaque.

And now, beginning in 2015, each and every bench will have its own I.D. tag attached to the seat back.

The fencing restoration and stonework repair are, again, long-term projects that will take years to complete. And, along the way, there will surely be additional challenges that come to the fore. With adequate funding, the Conservancy’s integrated vision for the health of the entire Park is, indeed, a possibility.

Visitors to the Park are welcome to stop by, during any of the Conservancy-funded projects to ask the workmen, or Conservancy volunteers and staff who may be assisting, any question they may have about the work in progress.

After all, this is YOUR Park. ☺

IN MEMORIAM: DONALD PELS AN EXTRAORDINARY MAN

Don Pels will be remembered with great fondness, appreciation and respect. Don lived across from Carl Schurz Park for decades. He moved away several times, but always returned, living at 10 Gracie Square, 130 East End and finally, with his wife Wendy Keys, at 120 East End.

Don was a gracious and charming neighbor who was fully engaged in the world around him. Civic duty and charitable giving were important to him. While living at 10 Gracie, he made it his mission to bring the light back to the lighthouse at the tip of Roosevelt Island.

Don was a visionary who understood the importance of parkland in the fabric of the urban landscape. He championed parks throughout New York City, and always had a soft spot in his heart for Carl Schurz Park.

Our Park was a source of joy to him, and our Conservancy the beneficiary of his magnificent generosity. Don was one of our most loyal and long standing supporters. It was his confidence and trust in the Conservancy that recently enabled us to embark on our most ambitious improvements to date.

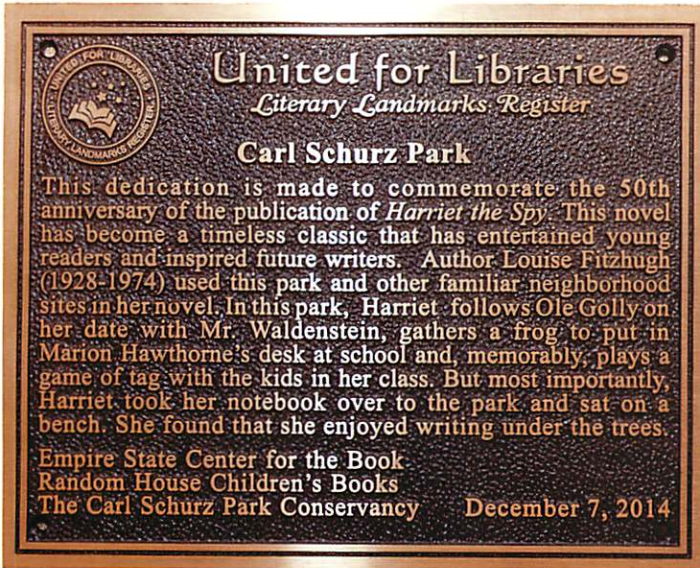
In the late twentieth century, Don returned a beautiful beacon to our neighborhood; in the twenty first century, he helped initiate the return of our Park to its original beauty. We will be forever grateful. ☺



DAN NELKEN

The Conservancy iTeam: Kenny Creed, Clare Thomas and Jill Byatt.

HARRIET THE SPY: 10028 ON THE PRINTED PAGE



The letter, from Margaret Tice at the New York Library Association's Empire State Center for the Book, began:

"Dear Mr. Williams:
I am writing you about an opportunity to make Carl Schurz Park a designated Literary Landmark in honor of Louise Fitzhugh's much loved literary work, *Harriet the Spy*."

Thus began discussions with the Conservancy, the Empire State Center for the Book and Random House, the publisher of *Harriet the Spy*, to create and install a plaque commemorating the 50th anniversary of the book's publication, serving "...as a lasting symbol of children's literacy and a wonderful children's classic set in the Park."

It is almost impossible to find someone, especially in 10028!, who has not read the book, either alone, or to children. A groundbreaking, middle-school read, *Harriet the Spy* is set in

and around the Park. She, and the author, attended the Chapin School.

To announce the dedication of Carl Schurz Park as a Literary Landmark – landing it in the company of over 200 other such American landmarks, including the Plaza Hotel and the Cathedral of Saint John the Divine in New York – Board Member Clare Thomas and her husband Jerry, held a reception in their home for representatives from the Center, the book's publisher, editors, agents and a number of the book's newer readers and their parents.

Following the reception, Rocco Staino, Director, Empire State Center for the Book, and editor Beverly Horowitz publicly presented the Park plaque to the Conservancy at the annual Holiday Tree Lighting, as over 1,000 community friends and family members joyfully looked on.

"The actual plaque presentation during the Conservancy's

holiday event was the most people ever to attend a Literary Landmark dedication in New York State," said Mr. Staino. "In addition, I was very impressed by the number of local

elected officials that attended. It is the Empire State Center for the Book's intention to work closely with City Councilman Ben Kallos in nominating other sites in the neighborhood." 📸



Plaque presentation dedicates Carl Schurz Park a Literary Landmark. Left to right: Beverly Horowitz, Rocco Staino, David D. Williams, Gale Brewer, Manhattan Borough President, Ben Kallos, Concilmember, Liz Krueger, NYS Senator.



Young fans of *Harriet the Spy* gather for a reception prior to the Holiday Tree Lighting dedication.

THANK YOU FOR YOUR GENEROUS SUPPORT

The Carl Schurz Park Conservancy is grateful to all those who made a contribution between January 1, 2014 and December 31, 2014. Without your vital support, our efforts at improving the park and offering annual events would be greatly diminished.

Individuals

\$100,000 and above

Pat and Peter Nadosy
Donald Pels and Wendy Keys

\$75,000 to \$99,999

Anonymous (1)

\$25,000 to \$74,999

Larry and Judy Howard

\$15,000 to \$24,999

Joan Haffenreffer Bartsch
and David Bartsch

\$10,000 to \$14,999

Sandye Berger
Larry and Mary McCaffrey
Donald M. Roberts and
Mary Gordon Roberts
Ora and Howard Smith

\$5,000 to \$9,999

Ginette and Joshua Becker
The Brearley School
The Chapin School
Stewart and Cornelia Clifford
Robert F. Gossett, Jr.
Evie Muller
Frank and Francine Murphy
One Gracie Square
Elizabeth and Christian Pompa
Louise Radin and
Leonard Kreynin
Richard E. Salomon and
Laura Landro
Marvin and Mimi Sandler
Ranjan and Chandrika Tandon
Clare and Jerry Thomas
Alan and Barbara Washkowitz
Wilf Family Foundation

‘Party on the Park’ Dinner Hosts

LeeAnn and Jeff Black
Susan and Richard Braddock
Judy Donahue and Bruce LaFranchi
Dolly and Jack Geary
Antonia and Jim Gorton
Edith and Hamilton Kean
Laura and Anthony Klarman
Kazie Metzger and John Harvey
Shilpa and Arvind Sanger
Jody and Ira Schwartz
Rob and Cornelia Spring
Kathy Walsh and Gene Bernstein

POP Cocktail Venue—The Chapin School

\$2,500 to \$4,999

George and Evelyn Benjamin
Brook and Roger Berlind
Christine Beshar
Thomas and Marcia Borger
Peter and Faith Coolidge
Michael and Beth Fascitelli
Joseph S. Fichera
Celeste Ford and
Fredric Leopold
Mary S. Glucksman
Barney and Julia Hallingby
Susan Heide
Mary Henry and Howie Rubin
Edward and Caroline Hyman
Mark L. Landis and
Janis Gade Landis
Joseph and Barbara Lane
Margaret Mellon
Hitchcock Foundation
Maureen Moreau

Barbara Nessim and

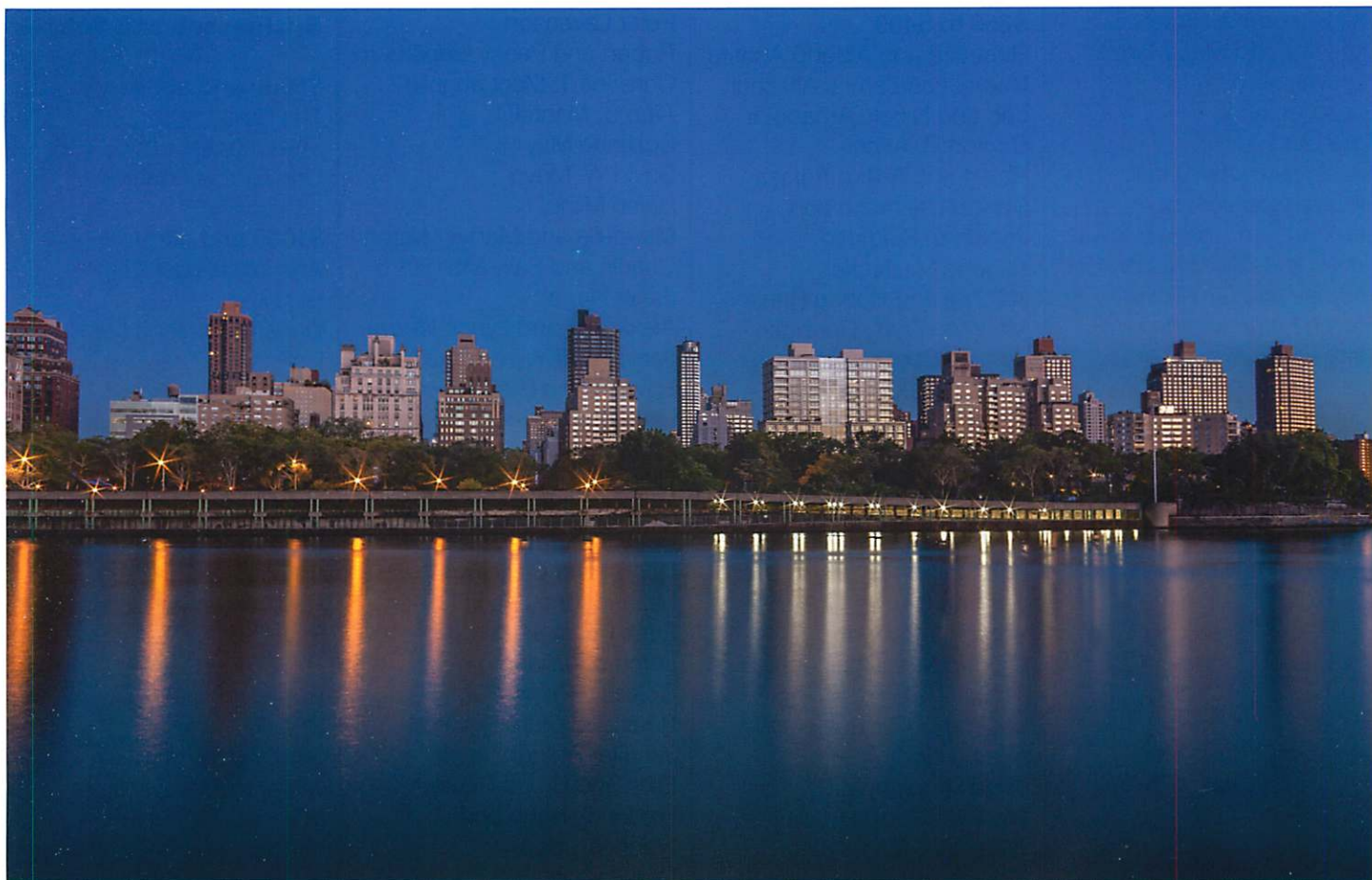
Jules Demchick
Kenneth and Ellen Roman
Kate Sheaffer
Moses Silverman and
Betty Robbins
Rob and Cornelia Spring*
Dr. Monica and Mr. Andrew
Weinberg

\$1,000 to \$2,499

Jessica and Joseph Ainsberg
Eric Altmann
John and Alexandra Amorosi
Doug and Elena Atkin
Edward and Steena
Auchincloss
Ann and Joel Berson
Fritz Beshar and Peter Lehner
Susan and Donald Brant
Cynthia Breen and

Laurie Dowley

Jane and Richard Brickell
Pat and Stanley Brilliant
Sarah Beatty Buller and
Mark Buller
Lisa and Dick Cashin
Kenny and Alex Creed
Todd Crider and
Pilar Secada
Brenda and Tom Curnin
Susan and Greg Danilow
Julie and Bob Daum
Kirk and Peggy Davenport
Degnan Family Foundation
Richard and Francesca
Diamond
John and Jodie Eastman
Nicholas and Emily Elliot
Robert and Margaret Fagenson
Thomas and Miriam Farmakis
Susan Ferris
Florence V. Burden Foundation
Robert Freund, M.D.
Ashley Garrett and Alan Jones
Ellen Gendler M.D. and
James Salik M.D.
Ted and Hilary Giuliano
Cathy Glaser and
Stephen Semlitz
John R. Gordon
David and Cari Grodner
Ellen K. Halsted
Troy Halterman
John and Felicia Hendrix
Karen and Jeff Hughes
Karen and Peter Jakes
Jamia Jasper and
Edward Silverstein
Richard and Patricia Jay
Pamela Jones
Herbert J. Kayden, M.D.
Hamilton and Edith Kean*
Amy Kuhn and Stuart Rosow



ROBERT ENGLEBRIGHT

Carl Schurz Park at dawn, viewed from Roosevelt Island.

Christopher and Cathy
 Lawrence
 Lawrence E. Lewis, III and
 Alberto Gaitan M.D.
 Ulises and Christina Liceaga
 Roger and Florence Liddell
 Carl and Nancy Lieberman
 Anne Lozman and Jay Harris
 James and Amira Luikart
 Caryn and Jim Magid
 Meghan and Trevor Magyar
 Chris and Claire Mann
 Reina Marin and Emilio Bassini
 Jeanne and Joseph Mazzetti
 Maureen McCallister and
 Charles Platt
 Alan Mirken
 Robert and Anita Nelson
 Robert and Patricia O'Brien
 Claudia and Gunnar Overstrom
 Marty and Dottie Payson
 Barry and Liz Pearson
 Andrew and Clare Pickering
 Lee and Nick Potter
 Yvonne S. Quinn

Raymond P. Ginther and
 Marie M. Ginther Charitable
 Fund
 Amy and William Rosenblum
 Lisa Roumell and
 Mark Rosenthal
 Julie and Rick Ruvkun
 Scott and Pam Schafner
 Ruth Calvin Scharf
 Jake and Cindy Scheinerman
 Gregg and Lisa Schenker
 Jeffrey and Cari Schnipper
 Eric and Erica Schwartz
 Philippe Seeman
 Marilyn Seifert
 Peggy and Crossan Seybolt
 Bill and Fay Shutzer
 Anne P. Sidamon-Eristoff
 Aaron and Joanna Sirulnick
 Margaret J. Smith
 Jean Stein
 Louise H. Stephaich
 The Stuyvesant Park
 Neighborhood Association, Inc.

David and Melite Sweet
 Begum and Will Taft
 Ellen and Bill Taubman
 Anne Alexis Coté Taylor
 John and Louisa Troubh
 Carla and Roland Villacorta
 Monica and Andrew Vogelstein
 Mandy Jane Volpe
 F. T. Wegmann
 Mark and Guilia Weissman
 Salvatore J. Zizza
 Anonymous (2)

\$500 to \$999

Jed O. Appleby
 Sean Appleby
 Ellen Asher
 Terry Asiel
 Deborah Berke and
 Peter D. McCann M.D.
 Stan and Susan W. Bernstein
 Mark C. Binting
 Nancy Bronstein and
 Joseph Sponholz
 Heleen Brody and Jeffrey Lang

Dr. Michela Catalano and
 Dr. Stephen Baum
 Mario and Carolyn Cibelli
 Arnold J. Civins
 Mary Claire and Chris Lagno
 Joan Hardy Clark
 Jan Colucci
 Margaret T. D'Albert
 Bettina and Brian Decker
 Carla and Frank DeSimone
 David and Carol Domina
 Judy Donahue and
 Bruce LaFranchi*
 David G. Eber
 Thomas and Claudia Eff
 Howard L. Ellin, Esq.
 Joseph and Barbara Ellis
 Elizabeth and Anthony Enders
 Jose W. Fernandez
 Sharon Flescher
 Sandra Gluck
 Carol J. Haley
 Fernand and Patricia Hayot
 Laurel E. Henschel

The Honorable Robert Horowitz and Mrs. Marcia Horowitz
 Russel Huang
 Dara Hunt
 Walter and Judith Hunt
 Ali and Peter Jennison
 Lisa and Paul Jeruchimowitz
 Robert and Cheryl M. Johnson
 Thomas and Simi Kahn
 Steven Klugman and Mary Faucher
 Joel Kurtzberg
 Tom and Terry Lamb
 Ira and Ruth Langer
 Ralph and Nina Levene
 Joseph William Lucca
 Leonard Majzlin and Carol Hall
 Robert and Cornelia Marakovits
 Mr. Peter Matson and Ms. Susan Colgan
 Stephen and Carolyn McCandless
 Steve and Dorian Mecir
 Nancy and Charles Wall Family Foundation Fund
 Thomas and Lisa Newell
 Michael and Elena Patterson
 Christine and Rodman Patton
 Peter Pickow
 Anthony and Susana Piscitiello
 Frank Pollak
 Edward Reiss
 Xiomara and Charlie Scheidt
 Elizabeth Schriever and John Brandow
 Harold Schwartz
 Robert and Katerina Shaw
 Janna Sidley
 Carolyn Skiffington and Gary Schechter
 Virginia B. Slaughter
 Emily Snider
 Sandy and Dan Stoller
 Margaret D. Sullivan
 Elliot Sussman, M.D. and Nancy Cromer Grayson
 Mary and David Tobin
 Eugen and Roxana Vartolomei
 Ray and Susan Volpe
 Mary Kay Vyskocil
 Arete Warren
 Bonnie T. Webster
 Mary Wheeler
 Anonymous (1)

\$250 to \$499

Rebecca and Alberto Acosta
 Naomi and James Altschul
 Leo and Nicole Arnaboldi
 Carlton R. Asher
 Robin and Arthur Aufses
 Marion Bachrach and Jonathan Siegfried
 Eugene M. Becker
 Mitchell and Ronda Benson
 Maureen Duffy Benziger
 Loraine Boyle
 Daniel Buck
 Jim and Joan Burke
 Jill Byatt and Elliot Epstein
 Elizabeth Doyle Carey
 Nancy and Ronald Carr
 John and Kristin Clark
 Lisa Colby
 Jeff and Connie Collier
 Rosanne Cooper
 Mr. and Mrs. Christophil B. Costas
 Eugene DePasquale and Agatha Nody
 Lloyd Dropkin, M.D.
 Stanley J. Dusek
 William M. Evarts, Jr.
 Marilyn and Bob Fassberg
 Suzanne Fawbush and Chris Grisanti
 Amy Feller
 Sandra Lotz Fisher
 Barbara Frankfurt
 Colleen Frey
 Lawrence and Alice Friedland
 Richard E. and Patricia Dunn Grey
 Mortin E. Grosz
 Molly and David Helfet
 Nina Henderson
 Tracy and Gary Israel
 Anthony and Joan Japha
 Bob and Sue Kamm
 Marc E. Klahr
 Paula Klein
 Arnold and Nina Kling
 Vickie Germain Kobak and Jonathan Kobak
 Suzanne Sanders Kuperman
 Jennifer and Trey Laird
 Rhona Landau and Steven Weissman
 Alfred and Carol Landess
 Arthur and Jane Lane
 Mari Langer

Peter Levenson
 Robert and Penny Lieberberg
 Christine T. MacLaughlin
 Alan D. Mantel
 Suzanne May
 David W. Mayo
 Helen Milne
 Mendelle and Martin Milston
 Charlie and Sally Morgan
 Janet Nagel
 Alexander and Lynne Neave
 Janice and Yoji Nimura
 Edward and Ellen Oelsner
 Laura and Peter Onghena
 Stuart Orsher and Gladys George
 Ann M. Packard
 Patty and Peter Paine
 Donna and Cary Park
 Mr. and Mrs. Jason Parkin
 Erica Pettis and Jerome Wallace
 Coles H. Phinzy, Jr.
 Rees and Clare Pritchett
 Jennifer Ratner
 Ellen and Bruce Ressler
 Frederick Rohn and Frances Lippa
 Neil Roman
 Loli and Simon Roosevelt
 Martin Satz
 Russell Schreiber
 Pamela Shiells and Gary Heinze
 Jeffrey and Heidi Siegel
 Ward and Carolyn Smith
 Matthew and Priscilla Snyder
 Jason Solinsky
 Mrs. Diane Spalter
 Susan W. Stachelberg
 The Honorable Henry J. Stern
 Haifan Stohrer
 Ronald Straci
 Brenda Neubauer Straus
 Liz Tominey and Jeff Reed
 Dr. Bonnie Uslianer and Rick Lepsinger
 Jonathan Vapnek
 Carol R. Vieth
 Yuka Wakino
 Dianne Weisheit-Olenick and Louis Olenick
 Gary and Rena Yalen
 Anonymous (3)

Businesses and Schools

\$5000 and above

The Brearley School
 The Chapin School
 One Gracie Square

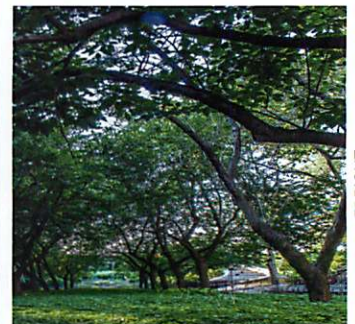
\$1000 and under

Animal Medical Center
 Bidawee
 Dorian's Seafood Market
 Calling All Pets
 Eric Landgraf Florist
 Fetching Dog Photos
 Freshpet
 Manhattan Chamber of Commerce
 Math for America
 Ottomanelli Brothers
 ParkEast Animal Hospital
 Paw Fuel Inc.
 P.S. 151
 Ruby and Jack's Doggy Shack
 Single Stop
 Stella and Chewy's
 VCA, Inc.
 Weruva

*In addition to their gifts to the Conservancy, these individuals generously hosted 'Party on the Park' dinners in their homes.

We would like to thank Yura for their magnificent donation of breakfast for the Gracie Art Show and goodies at the Sunset Films.

And our thanks to over 470 contributors whose donations of \$1 to \$249 totaled more than \$36,500.



ROBERT ENGLEBRIGHT

WHITHER BLOWS THE WIND? LOOK UP!



DAN NELKEN

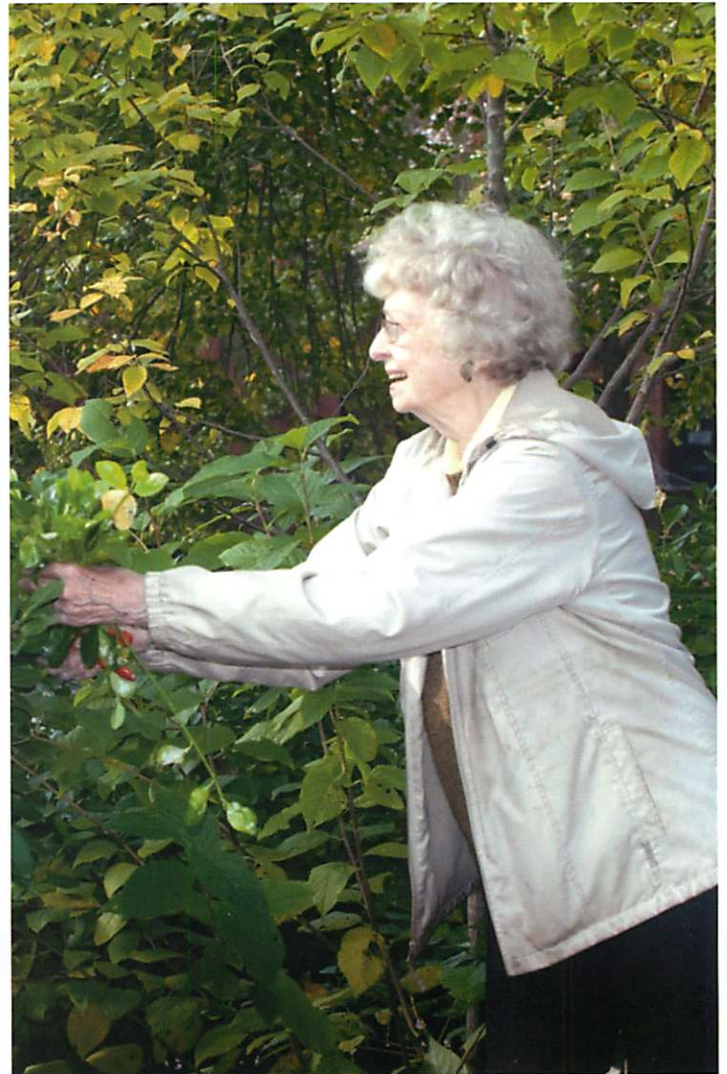
North. South. East. West.
Now gusting in a Park near you.

Replacing two vestigial posts at the twin peaks of the pergola at the southern end of the Park playground, two specially designed weather vanes, hand-crafted in Brooklyn, now turn gently in the wind. As a special acknowledgment of the decades-

long generosity of the Mary Gordon and Donald Roberts family, the Conservancy spent the past several years weighing design options for the sculpture.

“Originally, there was a weather vane on each of the rooftop peaks,” said Executive Director David Williams, referring to blueprint diagrams from the Parks Department files. “They were not very creative. Just a ‘C’ and an ‘S’ for Carl Schurz.”

With the encouragement of Manhattan Borough Parks Commissioner William Castro, the Conservancy decided it would allocate funds for the design of something much more special. Turning to a local artisanal ironworks firm, Brooklyn Modern, recommended by Board Member Larry McCaffrey, the Conservancy settled on a whimsical pair of designs: a facial storm cloud and a pedestrian, umbrella turned inside-out, buffeted by heavy winds. ☑



JEFFREY B. EVANS

Volunteer gardener and primer Liz Hendrickson tackles runaway euonymus in the Park.

YOU'RE NEVER TOO 'YOUNG' TO GARDEN

Long time neighbor, Liz Hendrickson is the conservancy's “most senior” volunteer gardener. Amazingly, she's in her nineties and has been working in the Park since the 1990's, or possibly earlier. Liz has been responsible for pruning the euonymous bushes along East End Avenue from 86th – 88th Streets and, even now, while recovering from a broken hip, has been diligently trimming the ivy on the stone walls surrounding Gracie Mansion. Liz is the epitome of the intrepid gardener and is known for her high standards as well as for her attractive and stately presence. As she makes her way through the Park, Liz often shares suggestions and insights with our many other gardening volunteers. By the way, she also mixes a mean Manhattan! ☑

BIG DIG FOR A BIG DOG

Avery Frankfurt, an English Setter who owned Park Conservancy volunteer and donor, Barbara Frankfurt, grew up in and around Carl Schurz Park. One of the early denizens of the Park dog run, Avery reached AKC championship at the age of five.

In his memory, Barbara asked that donations be made to the Conservancy.

In late summer, 2014, the Conservancy broke ground for the installation of a brand-new combination water fountain. A more complicated project than one might imagine, excavation, plumbing and repaving required an outside contractor and Parks

Department plumbers. A new concrete “apron” was laid, as a finishing touch, around the base of the fountain, situated just outside the steps to the Small Dog Run.

With the “Avery Fund” providing the seed money for the project, the Conservancy allocated the additional funding needed to complete it. The fountain, one of three in the Park, has a levered dog bowl at its base, along with a separate spigot that, with the pedestrian bowl at the top, ensures that dog owners visiting this area of the Park do not have to drink alone. 🐾



DAVID WILLIAMS

H₂O for dogs and their owners, courtesy the friends of Avery Frankfurt and the Conservancy.



The SDR before the new surface is poured.

‘SDR’ REDO DONE

The Park’s Small Dog Run’s (SDR) original re-construction, like the Large Dog Run, was completed through generous grants from then-Manhattan Borough Commissioner, **Scott Stringer** and then-City Councilmember **Jessica Lappin**.

The ongoing repairs, sanitation and maintenance have been funded for both runs by the Conservancy, with help from the NYC Department of Parks and Recreation.

Such repairs have, over the years, included resurfacing the Small Dog Run, the most recent having been completed in the summer of 2014.

“Resurfacing the Small Dog Run turned out to be a real challenge,” recalls **Nina Mortellito**, CSPC Board Member and Chair of its very vibrant Dog Run Committee. “We wanted the surface to withstand the elements and yet be kind to the puppies’ feet. Through much investigation, many

suggestions, and a variety of contractors, we settled on a wonderful gentleman who had a true appreciation of the Park and the run. We closed the run for several days and were grateful to all the SDR users for their patience and support.

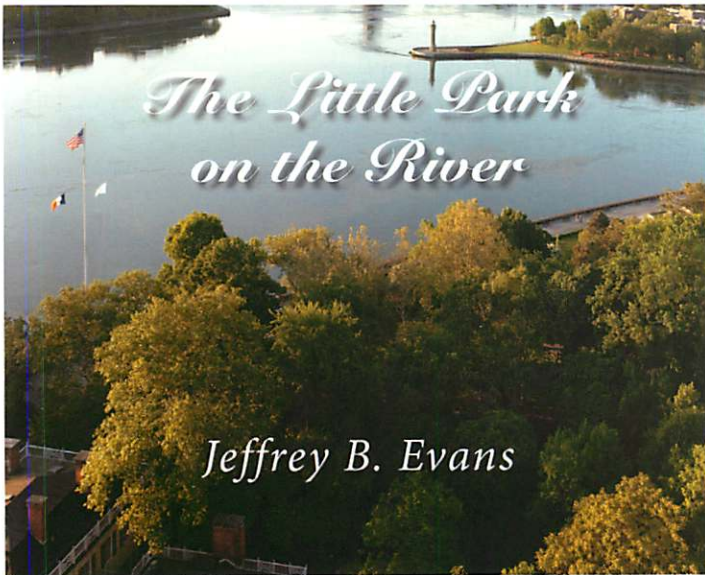
“We ended up with a run that not only looks terrific but functions to every one’s delight and satisfaction,” she added.

Not a mean feat that!

The Conservancy has, for many years, funded regular sanitations of both dog runs and purchased numerous hoses, rakes, and brooms. And Mutt Mitts for doggy pickups. The former supplies are used by dog owners for spot sweeping and cleaning. Then, twice a year, a cadre of volunteers congregate for a multi-hour deep cleaning and patching of both dog runs.

(All such volunteers deny that they pitch in just for the free bagels the morning of the cleanups.) 🐾

CONSERVANCY REPRINTS THE LITTLE PARK ON THE RIVER



The *Little Park on the River* tells the remarkable story of Carl Schurz Park. Its story is the story of New York City itself, from the Dutch to the modern day.

“The Little Park on the River tells the remarkable history of Carl Schurz Park. Its story is the story of New York City itself, from the Dutch to the modern day.”

Written by Jeffrey B. Evans, this extraordinary volume is a visual treat and a window into our past. Readers will find antique maps, archival photographs, lithographs, etchings, newspaper clippings and, of course, the thrilling stories behind key events in our neighborhood’s history.

Three years ago, the Conser-

venancy produced this book for the first time, as a limited, hard cover edition. In late spring of this year, there will be a soft-cover edition. As with the first edition, the number of copies

will be limited. The Conservancy will reserve copies of the soft cover edition as a thank you for donors who increase their annual contribution to the Mid-year Appeal or the Annual Appeal by \$1000 over those contributions in 2014 and for new donors to the Carl Schurz Park Conservancy who contribute \$1000 as a first time gift. ☺

EVENTS IN YOUR PARK THIS YEAR

FLOWERS!

Saturday, May 9
9:30 a.m. to 4:30 p.m.
PLANT SALE
East 86th St. and
East End Ave.

KIDS!

Tuesdays,
July 7, 14, 21 & 28
4:00 p.m. to 4:30 p.m.
SUMMER
SANDBOX MUSIC!
In the playground.

Saturday & Sunday,
October 3 & 4
11:00 a.m. to 1:00 p.m.
MoMA IN THE
PLAYGROUND
Held during the
GRACIE SQUARE ART SHOW

Saturday, October 17
11:00 a.m. to 1:00 p.m.
HARVEST FESTIVAL
(Rain date October 24th)

TUNES!

SUMMER SOUNDS 2015
Open air concerts on the
John Finley Walk at the
top of the East 86th Street
staircase.

Sunday, June 21
4:00-7:00 p.m.

MAKE MUSIC NEW YORK
City-wide concert series
Celebrate the first day of
summer! A collaboration with
Manhattan Borough
President, Gale Brewer

Wednesday, July 8
NATION BEAT performs.
A mix of New Orleans and
South America.

Wednesday, July 22
STEVE SHAIMAN and
SWINGTIME BIG BAND
Back for a sixth summer!

Except for the Sunday,
June 21 event, performances
are 7:00 p.m. to 8:30 p.m.
and are held on the
John Finley Walk, atop the
East 86th Street mall
overlooking the East River

in Carl Schurz Park. Limited
seating available.

FLICS!

SUNSET FILM FESTIVAL 2015
Why ask for the moon when
we have movies under the
stars in Carl Schurz Park?!

“WHATTA’ GAL!” Strong
women on the silver screen.

Tuesday, July 28
FROZEN
(Yes, THAT FROZEN!!!)

Tuesday, August 11
ADAM’S RIB
(The Tracy/Hepburn classic)

Movies start at 8:30 p.m.
in the Basketball/Hockey
Courts, Gracie Square and
the John Finley Walk.

ART!



Saturday & Sunday,
October 3 & 4
10:00 a.m. to 5:00 p.m.
East End Avenue from
East 84th St. to East 88th St.
www.graciesquareartshow.info
(Rain or shine)

WOOF!



Sunday, October 18
1:00 p.m. to 3:00 p.m.
(Rain date October 25th)
HALLOWEEN HOWL plus
HEALTHY HOUND FAIR
The hockey and basketball
courts, Gracie Square and
the John Finley Walk

**A PARTRIDGE
IN A PEAR TREE**
Sunday, December 6
5:00 to 6:00 p.m.
THE ANNUAL HOLIDAY
TREE LIGHTING
East 86th Street and East
End Avenue

**THE CONSERVANCY SALUTES
ITS GENEROUS DONORS, PAGE 6**

**HELP US PRESERVE
THE BEAUTY OF THE PARK**

The past ten years have seen dramatic changes. The result, our Park has never looked more lovely; the response from the public, overwhelmingly appreciative.

However, often people assume a public space entitles them to unrestricted use—to behave as they might in their own yard. Trying to accommodate thousands of park users takes a huge toll on the lawns, gardens and fences.

Because our Park is small, we make an effort to fence as little as possible. As a consequence, many areas remain open and vulnerable. We kindly ask that you refrain from walking your dogs through planted areas and teach children that these are not areas in which to play.

There is ample space for everyone's activities in Carl Schurz Park. With just a bit of understanding and consideration we can all enjoy the Park while helping to preserve its beauty. ☺

—Judy Howard, Chair of the Board of Directors



ROBERT ENGLEBRIGHT



ROBERT ENGLEBRIGHT

**Mission Statement
of The Carl Schurz
Park Conservancy**

The mission of the Carl Schurz Park Conservancy is to restore and beautify Carl Schurz Park, complementing the efforts of the New York City Department of Parks and Recreation. Our goal is to enhance the public's enjoyment and involvement in the Park. The Conservancy organizes volunteers to execute its projects and sponsors community events that are open to all.

PARK NOTES

Editor & Writer
David D. Williams
 Contributors
 Pat Nadosy
 Judy Howard
 Milt Verstandig
 Design
Barbara Lee Chapman

The Carl Schurz Park Conservancy is a 501 (c) 3 organization.

Printed on recycled coated text with soy based inks
Ecofriendly Printer, a Greg Barber Company

**BOARD OF
DIRECTORS**

Judy Howard
 Chair
Larry McCaffrey
 Vice Chair
Louise Radin
 Treasurer
Lisa Latcholia
 Secretary

Sandye Berger
Susan Heide
Nina Mortellito
Fran Murphy
Pat Nadosy
Marvin Sandler
Clare Thomas

David D. Williams
 Executive Director

Ann Meschery
 Director of In-Park Events

Banford Weissmann
 Seasonal Gardener

Patrick McCluskey
 Director of Operations

Mailing Address
 Carl Schurz Park Conservancy
 1483 York Avenue #20523
 New York, NY 10075-8819
 212.459.4455

