



Carl Schurz Park Conservancy | Spring 2023

Park Notes



MEET YOUR NEIGHBORS

Insects:

Unsung Heroes

Chairperson's Letter

The world is filled with unsung heroes. Those who quietly make the earth a better place.

Insects are a perfect example—completely overlooked by most, hated by many, the inspiration for countless products guaranteed to rid us of them—they are some of the most important creatures on the planet.

Simply put, almost every organism in the food web eats them or eats something that eats them or benefits from their pollination services. I believe it is clear we cannot live without them.

In this edition of Park Notes, we take a closer look at some of our most important neighbors, their contributions to our greenspace and what we are doing to make them welcome.

In fact, next time you happen upon one of the many small, flying, creeping, crawling denizens of the park, you may want to stop to pay your respects. After all, they deserve it!

Judy Howard
Chair, Board of Directors

Part of the Team!

Horticulture Associate, Crystal Woblan

Crystal Woblan joined the Conservancy last year as a Seasonal Gardener, and was recently promoted to the part-time, year-round position of Horticulture Associate. She started her career managing an indoor plant shop, later becoming a florist and floral designer for a high end luxury floral events company. Her designs have been featured in Harper's Bazaar, The Knot, and Vogue. Crystal's passion for plants led her to Carl Schurz Park Conservancy where she cares for and maintains plants throughout the park and assists in managing the Zone Gardener program.

Crystal oversees the Conservancy's social media accounts and volunteer inquiries.

Since starting at CSPC her interest has grown.



She is now enrolled in the horticulture program at Brooklyn Botanic Garden.

Crystal's passion for plants doesn't stop at the park. She cares for her impressive collection of over 100 houseplants and in her free time enjoys hiking or camping with her three dogs.



Insects: Unsung Heroes

Insects live almost everywhere on Earth. No other branch of the animal kingdom has such great variety in size, color and form.

All insects have six legs, a body divided into three sections and a hard outer shell or exoskeleton. Most have wings and antennae.

Like us, insects are farmers, guards, carpenters, papermakers, nurses, soldiers, hunters, trappers and undertakers. Insects feed on plants and animals but are also food for plants and animals.

Many die when winter comes and some migrate with the seasons. Many live through the cold by hibernating in the egg, larval or pupal stage and find shelter in structures,

under rocks, in leaf piles, in holes in plants or in burrows in the ground. During the cold months some produce a substance which acts like antifreeze.

What would life be like without insects?

Most of our food would

cease to exist. Almost 90% of plants require pollination to produce fruits, nuts, seeds, grains and tubers.

And almost every creature on the planet either eats bugs or eats something that eats them.

Without their breakdown of excretions and dead

organisms, we would soon be drowning in carcasses and waste.

Life, as we know it, would come to an end.

Let's take a closer look at some of the indispensable

Continued on page 10...



Leafcutter Bee (Adobe Stock)



Hover Fly (Adobe Stock)



Messy, by Design

You may have noticed an abundance of leaves and organic material in most of the garden areas in Carl Schurz Park. We, at the Conservancy, are working hard to make it that way.

Many insects live and overwinter in leaves: beetles, grubs, ants, earwigs, spiders, larvae, centipedes and caterpillars all of which are excellent sources of protein for birds. Fallen branches and decaying logs also provide homes for many insects.

Many good bugs, those that are busy pollinating or devouring harmful insect

pests, live in the ground. Their services are invaluable. Bumble Bees, Sweat Bees, Digger Bees, Leaf-cutting Bees, Digger Wasps and Cicada Killer Wasps all nest in the ground. Most are solitary females, and many seek the protection of leaf cover.

Why more insects? Simply put, more bugs, more birds. In fact, on a bird walk this past fall, 40 different species of bird were identified, more than at any other one point in time. Clearly, our efforts are paying off.



Chestnut-sided Warbler with caterpillar, by Steve Nanz

Join us in doing the following to promote beneficial insects:

- allow leaves and organic material to accumulate
- use no pesticides
- plant a wide variety of insect friendly, native plants which provide nectar and pollen
- allow plant stalks to remain over winter
- leave fallen logs or add logs to the landscape
- create compost piles
- let some areas of a garden grow wild

Eastern Cicada Killer Wasp: *a Gentle Giant*

Breana George
Horticulture Manager

Cicada Killer Wasps help keep the cicada population in check as cicadas can do extensive damage to trees.

Over the course of their lives, cicadas feed on tree roots. After mating, female cicadas deposit their eggs into the bark so their young can feed on the tree sap. Eventually, the young cicadas will drop from the tree, tunnel into the ground, and continue to feed on the roots of the host tree.

Cicadas are large insects best known for the vibrating sound they make during their summer mating season. Cicadas spend most of their 17-year lifespan underground eating and dig their way out only to mate.

Cicada Killer Wasps are

large solitary digging wasps that use cicadas to feed their young. The female wasp will sting a cicada to paralyze it and then take it below ground to her nest. Since cicadas are twice the weight, the wasp will drag the paralyzed cicada high up a stem to gain speed as she flies down to the entrance of her nest. Once underground, the wasp will lay its eggs in the host cicada. After hatching, the Cicada Killer Wasp larvae will feed on the huge cicada until they are mature enough to leave the nest.

Even though these wasps are large and can look intimidating, they are harmless to humans and are referred to as gentle giants—if you are not a cicada, that is.



Eastern Cicada Killer (top) Adobe Stock

Eastern Cicada Killer (Sphecius speciosus) with Cicada (bottom) Judy Gallagher (<https://www.flickr.com/photos/52450054@N04/>)



Meet Our New Zone Gardeners An Infusion of Might & Enthusiasm

Breeana George
Horticulture Manager

After several years of dedicated volunteerism and a six-month training program, **Loe Berelson** and **Barbara Glover** have officially been assigned

zones in the park. Loe will be maintaining the northern sloped garden in the Peter Pan area and Barbara the woodland garden area north of the 89th Street stairs.

Both spent extra time training with our

Horticulture Manager, Breeana George, who worked with them, one-on-one, teaching best gardening practices. This included their responsibility as park stewards, creating garden habitats to promote birds

and pollinators, composting organic materials and soil health.

The two take their roles very seriously but are never too busy to stop and chat. So, if you see them in the park, be sure to say hi.



Carl Schurz Park from above.

2022 Improvements and Restorations



In 2022, the compromised stairs at the northern most park entrance at 89th Street were fully restored to withstand the substantial increase in pedestrians accessing the ferry.

The Conservancy also invested in over 20 Victor Stanley garbage cans to replace the unsightly and rusted receptacles throughout the park.

Finally, sustainable coir, coconut fiber logs were installed to address the damaging and relentless erosion from both sides of the 86th Street Allee.

On the south slope, a

mix of clover and grass was planted. To the north, the lower shrub border was replanted with hardy and beneficial native vegetation and bare lawn areas with a grass and clover mix. Both sides have been temporarily fenced to allow everything to become established.



IN PARTNERSHIP WITH THE AMERICAN MUSEUM OF NATURAL HISTORY COUNTING (ON) BEES

Banford Weissmann
Master Gardener

Over the past few years, the Conservancy has been working with Sarah Kornbluth, the bee specialist at the American Museum of Natural History, to create a benchmark study about the bees living in our park. The study shows which species are residents and includes information on nesting habits and plant preferences for each one. Becoming familiar with our bee populations helps us monitor their resiliency and more fully informs our planting and maintenance practices. We want to make sure we provide the right plants for the bees and that they have adequate places to build their nests. Our goal is to set up the most hospitable environment possible for these little creatures that do so much for us.

For three years, we collected specimens twice per week, from spring to fall. Using pan traps and netting, we were able to collect a significant number of samples to study. The specimens went to the museum's lab with Sarah, where she mounted and labeled them with the date collected and area of the park where they were caught.

According to the data, we have 17 genera of bees in Carl Schurz Park, representing 38% of the genera found in all of New York State. For some genera, we may even have multiple species. Sarah has identified some of the bees at the species level, but many of them need to be examined under the microscope to determine exactly what they are. When the study is complete, our bees will be permanently housed in an official Carl Schurz Park case in the

Museum's collection!

One species that we were particularly excited to find is the Blueberry bee (*Habrapoda laboriosa*). While this type of bee is abundant around the eastern U.S., their numbers are being negatively affected by habitat loss. The females are specialists, meaning they depend mainly on one source of pollen and nectar – in this case, the Blueberry Bush (*Vaccinium*) – to feed their brood. While we do indeed have some Blueberry Bushes in the park now, we plan to add more this year. Blueberry bees are the most highly efficient pollinators of blueberries – they are important partners to blueberry farmers. The only time of year they can be seen is spring when the Blueberry Bushes are in flower. These bees nest in sandy soils in

sunnier locations, such as in the garden areas along the esplanade. Interestingly, some of those raised gardens used to be sandboxes.

We don't really know how our bee diversity compares with other similarly sized green spaces in the city. Central Park and Prospect Park have more diverse populations, but they are much larger than Carl Schurz. Various groups like the Greenbelt Native Plant Center are looking into species distribution in NYC, but research on parks the size of ours is difficult to find or simply doesn't exist.

The Conservancy is excited to be developing this new body of research on bees, and we will continue to share our findings. As you learn more about the bees in the park, you may begin to appreciate the park in a whole new way.



Master Gardener Banford Weissmann works at AMNH on the Carl Schurz Park bee study.



Masked bee



Carpenter bees on thistle



Here are the bees that we found in the park, so far: GENERA OF BEES IN CARL SCHURZ PARK

NAME	TYPE
<i>Habropoda laboriosa</i>	blueberry bee
<i>Coelioxys</i>	cuckoo bee
<i>Megachile</i>	leafcutter bee
<i>Apis mellifera</i>	honey bee
<i>Bombus impatiens</i>	bumble bee
<i>Bombus griseocollis</i>	bumble bee
<i>Anthidium</i>	wool carter bee
<i>Lasioglossum</i>	sweat bee
<i>Hylaeus</i>	masked bee
<i>Xylocopa virginica</i>	large carpenter bee
<i>Ceratina</i>	small carpenter bee
<i>Melissodes bimaculatus</i>	longhorned bee
<i>Osmia</i>	mason bee
<i>Andrena</i>	miner bee
<i>Halictus ligatus</i>	sweat bee
<i>Agapostemon</i>	sweat bee
<i>Augochlora</i>	sweat bee
<i>Hoplitis</i>	leafcutter-type bee



Carpenter bee on Monarda



Wool carter bee on lamb's ear



Sweat bee on dandelion



Miner bee in nest burrow

Insects: The Unsung Heroes
Continued from page 3
creatures commonly found in Carl Schurz Park.

Bees (Hymenoptera) are one of the most useful of all insects. In collecting nectar for honey and pollen to feed their young, they fly from flower to flower. This fertilizes plants and enables them to reproduce.

Honeybees are considered livestock and live in hives. However, most of the world's bees live alone or in small communities in underground nests or cavities in wood.

Ladybugs (Coleoptera) We appreciate them because they devour pests like aphids and mites that are harmful to plants. They also consume nectar from flowers. When predators approach, ladybugs are known to secrete a toxic, foul-smelling liquid from their legs for protection.

Flies (Diptera) are mostly known for carrying germs, but some are considered helpful. The Hover Fly is second only to the bee in its ability to pollinate plants.

Flies in their larval stage are vital as maggots consume garbage, sewage, and dead plants and animals.

Butterflies and Moths (Lepidoptera) Generally, butterflies are one of the most beautiful of all insects. Adults feed mainly on nectar and help pollinate flowers. After dark, moths take over the night shift for pollination.

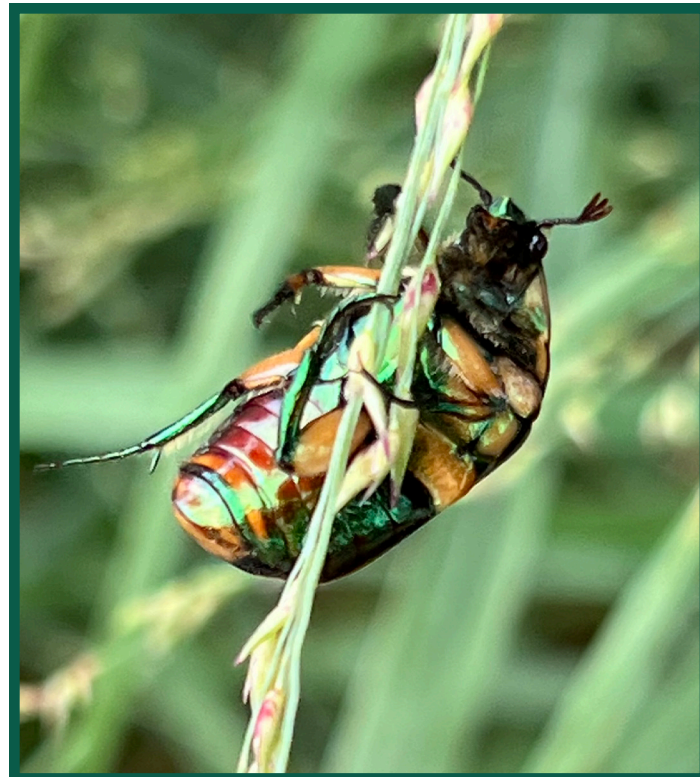
Here are some tips for telling the two apart:

Butterflies fly during the day and moths fly at dusk or at night. Butterflies have slender, hairless bodies and moths have plump, furry bodies.

Butterflies rest with their wings held upright and moths rest with their wings spread flat.

Butterflies have a bulb at the end of their antennae and moths do not.

In the park, a good place to observe these busy creatures is among the gardens along the Esplanade. But wherever you happen to see them, know that they are our most important partners in building a healthy, sustainable and beautiful world.



Common Green Bottle Fly (above) *Adobe Stock*, Hummingbird Clearwing moth (top right) *Charlotte Bill*, Brown Belted Bumble Bee (middle right) *Adobe Stock*, June Bug (bottom right) *Breeana George*



EVERY DAY IS EARTH DAY AT CARL SCHURZ PARK

Maintaining Carl Schurz Park as it is today is essential, but it is not enough.

We celebrate Earth Day Every Day, but our 2nd Annual Earth Day event was held in the Park on Saturday, April 22nd. In response to the urgent challenges of species decline, habitat loss, climate change and urban density, we are taking steps to restore native habitat, promote biodiversity and increase absorption of stormwater. Along with our exhibit boards throughout that Park, that will remain

up, our experts shared how we are ensuring the health and viability of the park for future generations.

We hope you will consider:

- The value of greenspace
- That our park is home to many creatures that contribute to a healthy planet.
- The challenges faced and the ways the Conservancy is addressing them.
- The importance of community involvement in protecting public spaces.

Explore
the many resources on the Earth Day homepage:



Watch
"Live from Carl Schurz Park":



Neighbors learn about soil and stormwater from CSPC Horticulture team Breeana George (standing) and Crystal Woblan (behind table) on Earth Day.

THANK YOU FOR YOUR GENEROUS SUPPORT

Carl Schurz Park Conservancy is grateful to all those who made a contribution between January 1, 2022 and December 31, 2022. Without your vital support, our efforts at improving the park would be greatly diminished.



\$75,000 and above

Donald A. Pels Charitable Trust
Pat and Peter Nadosy

\$50,000 to \$74,999

Ginette and Joshua Becker
Margaret J. Smith

\$25,000 to \$49,999

Joan Haffenreffer Bartsch and
David Bartsch
Fritz Beshar and Peter Lehner
Larry and Judy Howard

\$15,000 to \$24,999

Thomas and Miriam Farmakis
Kit Howard
Fiona and Eric Rudin
The Winston Foundation

\$10,000 to \$14,999

Thia Breen and Laurie Dowley
Suzanne and Matthew Donohoe
Larry and Mary McCaffrey
Donald M. Roberts
Marvin and Mimi Sandler
Douglas and Monica Taylor
Clare and Jerry Thomas
Carla and Roland Villacorta
Jillian and J.L. Zrebiec

\$5,000 to \$9,999

John and Alexandra Amorosi
Sandy Berger
LeeAnn and Jeff Black
Thomas and Marcia Borger
Janice and Kevin Brunner
JP Connolly
Celeste Ford and Fredric Leopold
Sandra and Laurence Gluck

Barney and Julia Hallingby
Susan Heide
Ed and Caroline Hyman
Daniel and Stacy Kesten
Lisa and Philip Latcholia
Albert Leonetti and
Ruth Anna Carlson
Leonard Majzlin
Claire and Chris Mann
Mary and Garrett Moran
Barbara and Thomas O'Connor
Maurine Packard
Michael Peterson
Louise Radin and
Leonard Kreynin
Holly Meeker Rom
Walter and Diantha Schull

\$2,500 to \$4,999

Brook Berlind
Lisa and Dick Cashin
John and Jodie Eastman
Janice and Bruce Ellig
Miriam Farber
Ashley Garrett and Alan Jones
Brittney Gates
Emily and Joshua Glassman
Lucia Kellar
Nicole Knight
Judith Krassner
Suydam Lansing
Christopher and Cathy Lawrence
Roger and Florence Liddell
Margaret Mellon
Hitchcock Foundation
Juan F. Mendez
Maureen Moreau
Patty and Peter Paine
Elizabeth Pompa
Yvonne S. Quinn

Steven Restler
Kenneth and Ellen Roman
Emily and James Satloff
Emily Schmetterer
Wendy and Joel Spellun
Mary and David Tobin
John and Louisa Troubh
Susan Tucker
Haitham and Elizabeth Wahab
Deborah Miller Zabel and
William D. Zabel

\$1000 to \$2,499

Karen and Lewis Altfest
Eric Altmann
Doug and Elena Atkin
Marion Bachrach and
Jonathan Siegfried
Mitchell and Ronda Benson
Stan and Susan W. Bernstein
Andre Bishop
Sandy and Linda Boothby
Donald and Susan Brant
Howard and Ellen Brecher
Jane Chirurg
Dr. Florence Comite
Todd Crider and Pilar Secada
Susan and Gregg Danilow

Degnan Family Foundation
Beth Rudin DeWoody
Judy Donahue and
Bruce Lafranchi
Dorian's Seafood Market
Elizabeth and Anthony Enders
Jeffrey B. Evans
Robert Fagenson
Dolly and Jack Geary
Ellen Gendler and James Salik
Katherine Gibson and
Charles Cowing
Ted and Hilary Giuliano
John and Kiendl Gordon
Sarah Gould and
David Steinhardt
Stephen Grambling and
Luciana Vieira
Jo Hallingby
Lesley Harrison
Betty and Ed Heilman
Don Ihde and
Linda Einhorn-Ihde
Pamela Jones
Kim Konigsberg
Amy Kuhn and Stuart Rosow
Andrew Lerner
Ann Lozman

Julie A. Luttinger and
Charlie Graves
Tara Maitra
Jeanne and Joseph Mazzetti
Steve and Dorian Mecir
Lucille and Edward Meyer
Mary F. Miller
Melissa and Bob Mittman
Margaret and Charles Nastro
Carol Nehring
Barbara Nessim and
Jules Demchick
Thomas and Lisa Newell
Claudia and Gunnar Overstrom
Susan Porter
Lee and Nick Potter
Natalie Noone Pressly
Kevin A. Rinker
Amy and William Rosenblum
Lisa Roumell and
Mark Rosenthal
Julie and Rick Ruvkun
Ruth Calvin Scharf
Gregg and Lisa Schenker
Lisa Schultz
Ira and Jody Schwartz
Melissa and Stephen Shapiro
Juliet and Nigel Sharrock
Katerina and Robert Shaw
Bill and Fay Shutzer
Moses Silverman and
Betty Robbins

Karen Sue Smith and
Rose Frances DiMartino
Theresa and John Sprague
Begum and Will Taft
Ranjan and Chandrika Tandon
Anne Alexis Coté Taylor
Monica and Andrew Vogelstein
Mandy and Noel Volpe
Lynn Warshow
Dianne Weisheit-Olenick and
Louis Olenick
Mariana and Michael Weiss
Salvatore J. and Patricia Zizza

\$500 to \$999

Ellen Agress
Renee Ascher
Ellen Asher
Terri Asiel
Paul Baranay
Lauren and Jason Behfarin
Deborah Berke and
Peter D. McCann, M.D.
Vicky and Seth BerkeMeyer
Mark Binting and
Karen Schwichtenberg
Thomas and Inbal Brener
Pat and Stanley Brilliant
Nancy Bronstein and
Joseph Sponholtz
Peter Buffington
Jane and Ruth Burton

Pam Butler
Jill Byatt
Mary Cirillo-Goldberg
Kim Cook and Mark Mahoney
Kenny and Alex Creed
Brenda and Tom Curnin
Philip Cusick
Bettina and Brian Decker
Robin Dibner
Carol E. and David A. Domina
Thomas and Claudia Eff
Nicholas and Emily Elliot
Barbara Feigin
Jose W. Fernandez
Kathy Fernando and
Ananda Chaudhuri
Audrey and Gary Ferraro
Barbara Frankfurt
Erin Friedland
Linda and Harold Friedman
Judy Garson and
Steve Rappaport
Errol Glasser
Paul Goldenberg
Timothy and Karen Goodell
Ellen K. Halsted
John and Felicia Hendrix
Catarina Hioe
Eleanor and Leigh Hoagland
Risa Honig
Russel Huang
John J. Huber,III

Karen and Peter Jakes
George M. Janes and
Deborah Ruth Cohen
Ali and Peter Jennison
Thomas and Simi Kahn
Lynn Kearney
Karen and Kevin Kennedy
Steven Kessler and
Barbara Rohn Kessler
Robert S. Kinkel, Jr.
Marc Klahr
Steven Klugman and
Mary Faucher
Joel Kurtzberg
Elizabeth and Robert La Blanc
Terry and Tom Lamb
Alfred and Carol Landess
Joseph and Barbara Lane
Ben and Cameron Leax
Robert and Penny Lieberberg
Art and Nancy Lutzke
Anne Marie Macari
Allan and Janet Mantel
Stephen and
Carolyn McCandless
Sage Mehta and
Michael Robinson
Ann Meschery
Kazie Metzger and
John C. Harvey
Charles and Sally Morgan
Continued on next page...



A male Wool Carder Bee on lambs ear leaf (Adobe Stock)

\$500 to \$999 continued

Thomas Morris
Eileen Murphy
Karen J. Nelson
David and Melanie Niemiec
Anthony and Susana Piscitiello
Dennis Powers
Kathryn Quigley
Alison and Scott Ramsey
Susan and Steven Rautenberg
Ali and Ian Rorick
Elizabeth Ryan
Martin Satz
Beth Schlansky
Eric and Erica Schwartz
Barry Seager
Kate Seib-Keenan and Eoghan Keenan
Anne P. Sidamon-Eristoff
Matthew and Priscilla Snyder
Michael and Midge Townsend
Jonathan Vapnek
Nicholas Viest
Kathy Walsh and Gene Bernstein
David D. Williams
Barbra and Barrett Wolf
Kathy and Tim Wright
Estelle Irene Young, M.D.
Kimberly Young
Nancy Young and Paul Ford
Lizzie Eder Zobel de Ayala and Jaime Zobel de Ayala
Anonymous (3)

\$250 to \$499

Kevin Abernathy
Rebecca and Alberto Acosta
Peter and Alice Alderman
Carlton R. and Florence Asher
Kenneth Barkoff and Denise Caplane
Gary and Shari Belitz
Evelyn Benjamin
Ashley and Edward Benton
Heleen Brody and Jeffrey Lang
Edward and Robin Buckley
Jim and Joan Burke

Elisabeth Cannell
Dr. Michaela Catalano and Dr. Stephen Baum
Jean Christenson
Mario and Carolyn Cibelli
Jeff and Connie Collier
Janis Conner
Ian Crawford
Linda DeCherrie
Antonia Derezeas
Carla and Frank DeSimone
Stanley J. Dusek
Allegra and Morgan Eiffler
Mrs. William M. Evarts, Jr.
Michael and Beth Fascitelli
Marilyn and Bob Fassberg
Suzanne Fawbush and Chris Grisanti
Amy and Howard Feller
Robin Feuerstein
Brett Fischer
Sandra Lotz Fisher
Rocky and Sarah Fishman
Sharon Flescher
Lawrence and Alice Friedland
Fay Gambee
Bradley Gardiner
Jean and John Geater
Anatole and Nancy Gershman
Dawn Gingold
Roz Goldberg
Richard E. and Patricia Dunn Grey
Stuart and Joan Gross
Judith and Morton E. Grosz
Carol J. Haley
Vivian Hedges
Gary Heinze
Molly and David Helfet
Nina Henderson
Susan and Elliot Hershman
Phyllis Hoenig
Bonnie L. Howard and Charles M. Charrow
Kristin and Howard Johnson
Peter Keenan
Elliot Klass and Sarah Muskat-Klass
Brendan Koeth

Mary Claire and Chris Lagno
Mari Langer
Nancy LaValle
Peter Levenson and Pamela Sweeney
Phyllis Levitin and James Shaw
Susan Lewis and Scott Brodie
Ulises and Christina Liceaga
Toni and Ken Liebman
Greta G. Loomis
Martin L. Markowitz
Anne Parker Mills
Susan Milsom
Mia M. Mochizuki, Ph.D.
Patricia Murphy
Lynne Neave
David Neft
Deanna Neiers
Robert and Anita Nelson
Natasha Nicolaides and Ted Chung
Janice and Yoji Nimura
Alison Jane North
Christine and Brian O'Hanlon
Joyce Ellen O'Reardon-Dockweiler
Susan Johnson Orton
Ottomanelli Brothers
Carol and Nicholas Paumgarten
Emily and Robert Peruzzi
Robert and Daphne Philipson
Katharine Phillips
Nesli and Brian Pipkins
Rhonda Pohl and Mark Feldman
Carol Quinn
Jennifer Ratner
Adela Rodriguez
Neil Roman
Victoria and Donald Rose
Jonathan Rozoff
Brendan and Jill Ryan
Edith Salton
Robin Cindy Sanderson
Kristin Sansone and Jim Helmus
Brenda Sauer
Diane Schoenthal
Judith and Leslie Schreyer
Sue Schwartz and Howard Muchnick

Joseph Smith
Sharon D. Smith
Ward and Carolyn Smith
Lori Soderholm-Weber
Rob and Cornelia Spring
Nancy and Mitch Steir
Ronald Straci
David and Melite Sweet
Ellen and Bill Taubman
Howard Teich
Doria Tenca
Robert Toan
Bonnie Uslianer and Rick Lepsinger
Eugen and Roxana Vartolomei
Mary Kay Vyskocil
Yuka Wakino
Karin Waldbrand
Christopher English Walling
Nancy Ann Ward
Arete Warren
Lenore M. Weber
Matthew Weiner
Steven Weissman
Mary Wheeler
Gilbert Wise
Loretta K. Yellen
Yorkville Buy Local
Anonymous (2)

And over 380 contributors whose donations of \$1 to \$249 totaled more than \$30,102.

We'd like to express our appreciation to the following schools for their generous support:
The Brearley School
The Chapin School

Heartfelt thanks to:
Dorian's Seafood Market for helping underwrite our summer events.
Yura for their donation of breakfast for the Gracie Square Art Show artists.

Carl Schurz Park Conservancy Event Calendar 2023

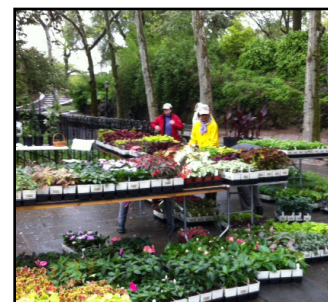
Volunteer Days

February 11th
March 11th
April 8th
May 20th
June 10th
September 16th
October 14th
November 11th
9:30 a.m. to 12:30 p.m.
East End Ave/86th Street
Registration Required



Earth Day Celebration

Saturday, April 22nd
1:00 p.m. to 3:30 p.m.
Throughout the Park



Annual Plant "Sale"

Saturday, May 13th
10 a.m. to 4 p.m.
(Rain date May 14)
East End Ave.
at 86th Street



**Summer Sounds
Open-Air Concerts**

Jazz Night
Wednesday, July 13
7:00 p.m. to 8:30 p.m.
John Finley Walk at the top of 86th St. staircase.

Steve Shaiman and Swingtime Big Band!
Wednesday, July 19
7:00 p.m. to 8:30 p.m.
John Finley Walk at the top of 86th St. staircase.



**Sunset Films
"Dog Days of Summer"**

The Incredible Journey
Wednesday, August 2nd
Sunset
Basketball/Hockey Court at 84th St.

Oliver & Company
Wednesday, August 9th
Sunset
Basketball/Hockey Court at 84th St.



The 49th Annual Gracie Square Art Show
Saturday and Sunday, September 9th and 10th
10:00 a.m. to 5:00 p.m.
East End Avenue from 84th to 88th St.
(Rain or shine)
www.gsanyc.org

Harvest Festival
Saturday, October 15th
12:00 noon to 2:00 p.m.
Playground at 84th St. and Peter Pan Walk



Halloween Howl and Healthy Hound Fair
Sunday, October 22nd
12 noon to 3:00 p.m.
(Rain date October 29th)
Basketball/Hockey Court at 84th St. and John Finley Walk

Holiday Tree Lighting
Sunday, December 4th
5:00 p.m. to 6:00 p.m.
(Rain, snow or shine)
East End Ave. at 86th St.



Geometer moth by Steve Nanz



Carpenter bee (center) with Halictus bee (smaller, left), by Breeana George.

HOW TO DONATE

Donate Online

For online donations, visit www.carlschurzparknyc.org

Please mail your gift to:

Carl Schurz Park Conservancy
1483 York Avenue, #20523, New York, NY 10075-1021
212-459-4455

Matching Gifts

If your employer matches gifts, please follow their matching gift protocol to initiate the match; we will complete the process to multiply your support.

Planned Giving

Please consider including the Conservancy as a beneficiary of your estate by joining our Peter Pan Society. You may call our office to speak with us.

Stock Gifts

For instructions on how to donate stock to CSPC, please call or e-mail our office.

Carl Schurz Park Conservancy Mission Statement

The mission of Carl Schurz Park Conservancy is to restore and beautify Carl Schurz Park, complementing the efforts of the New York City Department of Parks and Recreation. Our goal is to enhance the public's enjoyment and involvement in the Park. The Conservancy organizes volunteers to execute its projects and sponsors community events that are open to all.

Board of Directors

Judy Howard, **Chair**
Pat Nadosy, **Vice-Chair**
Louise Radin, **Treasurer**
Diantha Schull, **Secretary**
Janice Brunner
JP Connolly
Susan Heide
Dan Kesten
Lisa Latcholia
Claire Mann
Larry McCaffrey
Barbara O'Connor
Marvin Sandler
Clare Thomas
Roland Villacorta
Jillian Zrebiac

Patrick K. McCluskey
Executive Director
Ann Meschery
Director of In-Park Events
Breeana George
Horticulture Manager
Crystal Woblan
Horticulture Associate
Banford Weissmann
Master Gardener
Gavilan Longino
Cartage Supervisor

Contact Us:

212-459-4455
patrick@carlschurzparknyc.org

Printer Jim Ayers, www.ayersco.com Design: Patrick K. McCluskey

This publication and its mailing materials are recyclable.