

# PARK NOTES

**SPECIAL ISSUE**

**SPRING 2013**

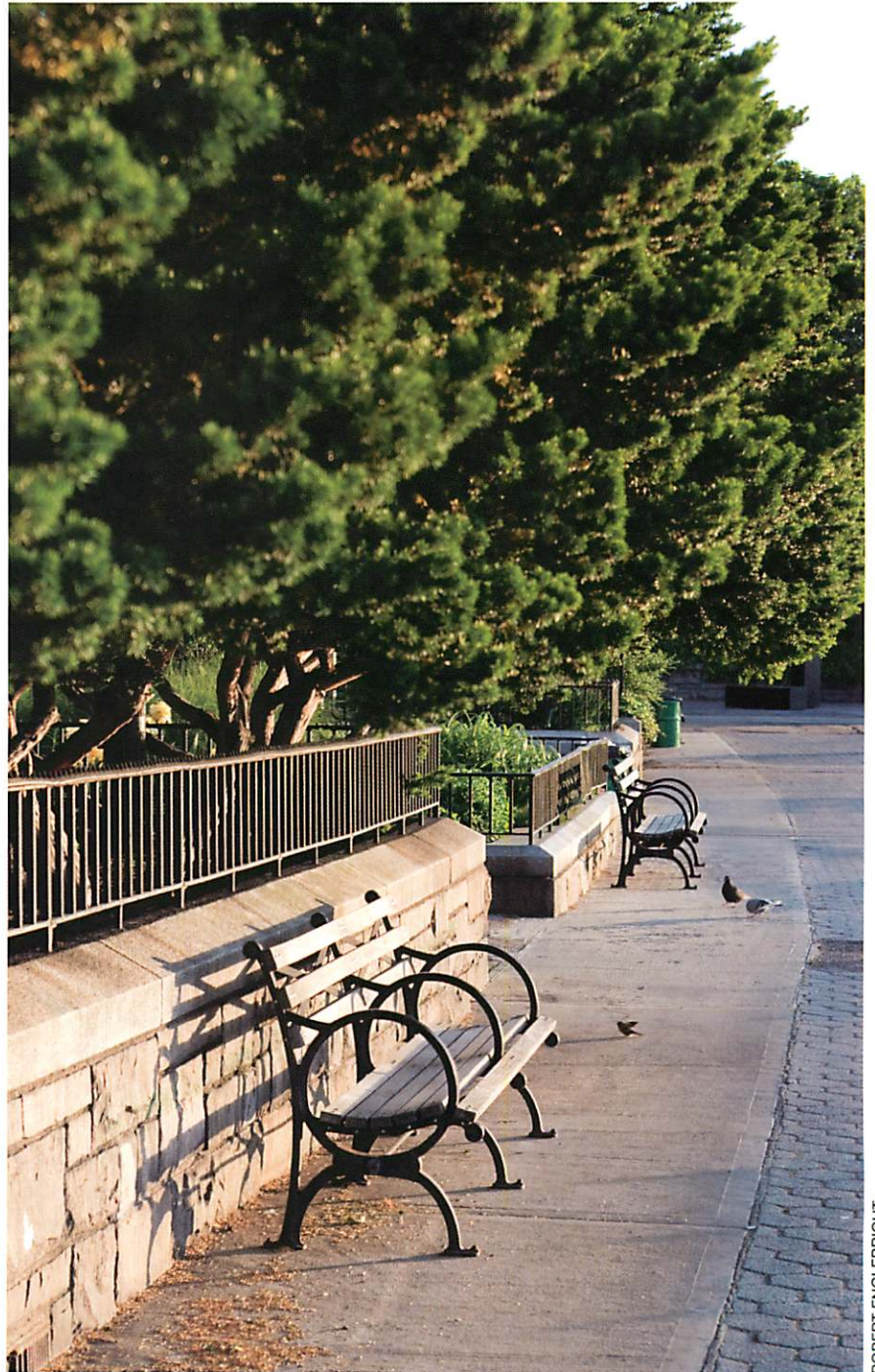
## **CONSERVANCY 101: ITS DO'S AND DON'TS**

“The mission of the Carl Schurz Park Conservancy is to restore and beautify Carl Schurz Park, complementing the efforts of the New York City Department of Parks and Recreation. Our goal is to enhance the public’s enjoyment and involvement in the Park. The Conservancy organizes volunteers to execute its projects and sponsors community events that are open to all.”

**F**orged during the city’s calamitous budgetary crisis of the 1970s, the Carl Schurz Park Association (now Conservancy) enlisted the talents, energy, commitment and generosity of a group of neighbors to hold back the deterioration of the community’s beloved park. As would be replicated in living rooms and offices around New York, these neighbors embarked, in fits and starts, upon a journey that would transform not only the focus of their efforts, but the definition of what public/private partnerships would become.

What was untested then is now business as usual, with decades-old nonprofits partnering with elected officials and the Parks Department to, in some cases, manage the parks under their care or, as is the case with the Conservancy, augment the City’s management through ever-increasing programs and projects.

Considered a slippery slope at that time, currently conservancies and friends groups are proven assets in the growing health of precious green space. And in the seismic shift in the public’s appreciation and respect for its parks. *continued on page 4*



*Sunrise along the John Finley Walk.*

**EXECUTIVE DIRECTOR'S LETTER**

Over the past few months I have had the pleasure of sitting down with representatives of several new and evolving park groups and conservancies. Each of them has had the same goal: to learn from the Carl Schurz Park Conservancy what it takes for a community to partner with the Parks Department for the betterment of its community park.



What was once a groundbreaking idea has now become business as usual. Parks groups in New York and beyond are no longer seen as a headlong slide down a slippery slope of privatization of a public resource. Rather, the engagement by a community in "its" park has become a joy, a worthy cause, a personal investment in the viability of the surrounding community.

Many, many years ago the then-President of the Conservancy, **Laura Mayer**, and I attended a panel discussion with Parks officials and representatives from groups such as ours. I cannot recall the exact title of the presentation, but the words, "slippery slope" were in it. Jump ahead twenty years and the phenomenon of community residents digging in the dirt, planning open-air events and donating generously to support conservancies has become a model for an engaged citizenry.

It has become a given and new groups are eager to know how it is done.

What is unique to a park conservancy, it seems to me, is the fact that the results of the funds donated and the volunteer hours dedicated can be enjoyed at will. Just take a walk in the park.

Additionally, there is much pleasure to be gained by volunteering time, or donating funds, to a public park such as Carl Schurz. Finding your inner gardener, dog lover or music aficionado can be as simple as asking, "Can I help?" Thus, a side benefit of personal involvement with the Carl Schurz Park Conservancy is not only the end result, but also the act of doing it.

In this issue, you will read about what the Conservancy does—and does not do. And you will read about a few friends of the Conservancy and what it has meant to them to come into the tent.

To those of our neighbors who have provided the support to better Carl Schurz Park, may you continue to find pleasure in the process. And the results at the end of the day.

If you are new to us and the Conservancy, read on and learn what has come before and what is ahead for us down the road.

And to those in other parts of our great town, who see the wisdom and pleasure in adopting a neighborhood public park, hat's off.

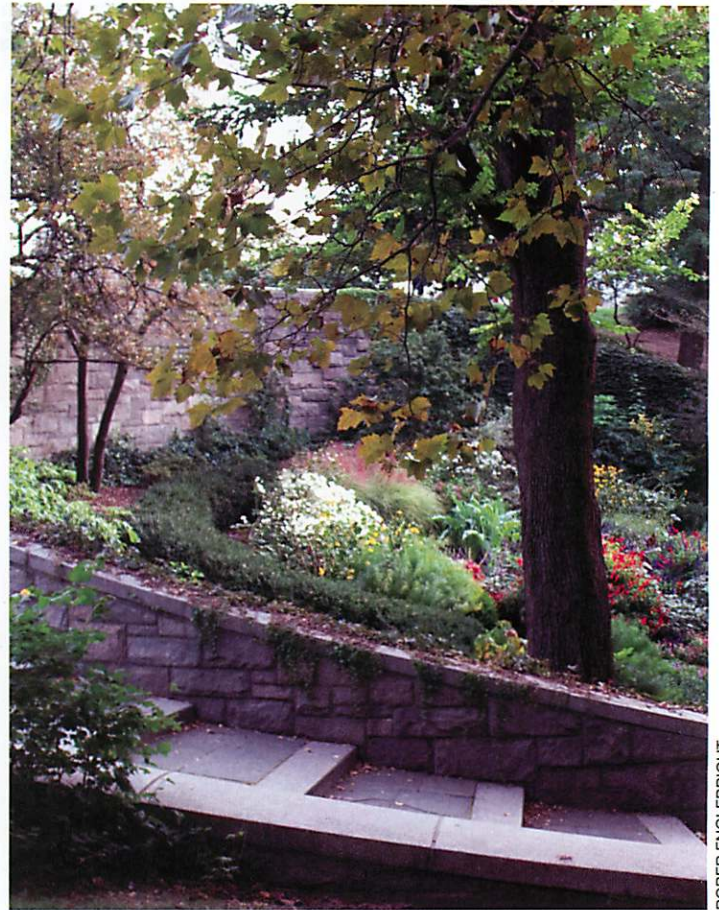
Jump in, the water's fine.

Leave no stone unturned.

A rolling stone gathers no moss.

Or: just give me a call!

David D. Williams  
Executive Director



ROBER ENGLEBRIGHT

**BANFORD WEISSMANN,  
SEASONAL GARDENER  
EXTRAORDINAIRE!**

We asked **Banford Weissmann** for her thoughts on what it is like to care for one of the Park's most special gardens. And places:

"New Yorkers need nature. In an exciting city with a dense, urban landscape it helps keep us in balance to have a place where we can find peace and natural beauty. And to me, it's fulfilling to give shape to such a restorative place.

"My primary focus at the park is the Hoop Garden, and I love it when I overhear people talk about how it makes them feel. Children come to watch the feasting butterflies or ask me if they can help with the watering. People take family portraits in front of the Hoop. On the

bench under the elm, young couples find a pleasant place to talk quietly together. During the migration season, a birder will point out an unusual species that's eating the fruit on the hawthorn against the back wall. It's incredibly rewarding as a gardener to participate, directly and indirectly, in those experiences.

"I also enjoy when the Hoop Garden is chosen as a backdrop for everything from weddings to fitness videos to yoga classes. Scenes in movies and TV shows have been filmed there. It's a real thrill to see 'my' garden in the background whenever I catch the current Kit Kat commercial." ☺

# VOLUNTEER PROFILE: SUSAN BERNSTEIN AND THE GOOD EARTH

On Saturday, February 23, the Conservancy hosted its annual Volunteer Appreciation Day luncheon for Park volunteers at the Chapin School. Much as it has done for the past seven years.

And, pretty much as it has been for those seven years, there were a lot of familiar faces. Dependable faces. Happy faces.

Because:

A) Once a Conservancy volunteer, ALWAYS a Conservancy volunteer!;

B) A Conservancy volunteer is someone the Conservancy can always count on for help and support and great ideas to make the Park better;

C) Volunteers, with the Conservancy and any successful nonprofit that values its volunteer force, love what they are doing and get back from their work as much, if not more, than they put in.

**Susan Bernstein**, Michigan born and raised, is one such happy, Conservancy 'lifer'! And she owes it to her and her husband, **Stan's**, beloved husky, shepherd mix, **Sapphire**:

I was a teacher in Michigan for 16 years, teaching Latin and English. Later I did a little work at the Graduate Library at Michigan. Then Stan was offered an opportunity to work at the U.N. so we moved to the City in '92. With Sapphire who was only a year and a half at the time.

"One of the reasons we chose Yorkville," Susan continued, "Was because Stan found out you could have a dog in the neighborhood and use the Park. Not like Tudor City, where dogs



Susan Bernstein and April showers.

weren't allowed in the park areas – on leash or off! – at all."

With Stan at work at the U.N., Susan's job was raising a young dog in a new place. And around that time, the Conservancy was actively researching and designing one, later two, dog runs where a dog could be legally off leash. And have fun.

But, like everything in Carl Schurz Park, it took volunteers to make it happen, and make it better. So, she pledged her time and effort to help make the dog runs in the Park become among the best in the City. If not the country.

"We got involved when the LDR area was dedicated as a dog run. We took over from you (**David Williams**) as co-chairs of the Dog Run Committee. And then Sapphire won two prizes at two of the early Halloween Howls: she won as Canis Major and later, proudly, as David

Bow-Wowie."

By then, Susan was an ace volunteer, well on her way to becoming an almost daily visible, dependable face in the Park.

"After a couple of years, I was invited to join the Board and you asked me to be secretary. And then, around 2002, when you were President of the Association (now Conservancy) you asked if I would be Chair of the newly constituted Gardening Committee. **Judy Howard** graciously offered to Co-chair with me."

Did she know much about dirt and twigs and plants and leaves at the time, she was asked?

"Not really. We had had houseplants. And we had had a little garden at our townhouse in Michigan. But working with **John Tweddle**, the Parks Department Gardener, and with Partnership for Parks, I began to learn a lot.

"But what got me REALLY interested in horticulture was when I took over the hill on the south side of the 87th Street walkway. John would tell me what to put in there and because it is so shady it was a lot of fun learning what plants can flower in the shade.

Susan is credited, in large part, for the setup, coordination, management and vision for the Gardening Committee. She provided the strong foundation and structure necessary for the growth and success of the volunteer gardening effort in the Park.

It can also be said that what happens in the Park... doesn't necessarily STAY in the Park. That is, volunteers who become regulars get to know their volunteer colleagues. And friendships naturally form.

"I agree with you that through volunteering you get to know people. You do develop friendships. Volunteers discover they have similar interests. Really close relationships are formed. The culture is very close."

Thinking back upon the two distinct volunteer pursuits with which she has been involved, Susan would agree that an Art Show volunteer, playground volunteer, summer events or dog run volunteer has the same interest at heart as a gardening volunteer:

"Everybody enjoys the Park. That's where we all meet. It starts with being involved with the Park and everyone wants what's best for it."

Good dog, Sapphire. Good dog. 🐾

continued from page 1

**Barbara Chapman**, the Conservancy's graphic designer, would visit Carl Schurz Park in those early, dark days for magazine or catalog photo shoots. The Park offered a classic New York City setting in a manageable space.

"We'd assign one of our crew to watch over equipment and purses. Carl Schurz Park was really not considered a very safe place back then," she recalled.

That was then.

Now, thanks to the extraordinary efforts of Conservancy volunteers, and its generous donors the story is a far different one.

**Francine Murphy**, the Conservancy Treasurer would add that "As Treasurer, along with every other Board member, our objective is to ensure that the community's much appreciated generosity is reflected on the ground so that we may all continue to enjoy our beautiful Park both now and in the future."

But what DOES the Carl Schurz Park Conservancy actually DO in the Park? It is not only a good question, it is a timeless one: what the Conservancy did in the Park in 1993

is not the same as what it does now, or plans to do, in the future.

"I'd have to say that the past five years or so have seen the most dramatic increase in the Conservancy's investment in the Park. And the most consistent, long-haul planning for the future well-being of the Park," says Executive Director, **David D. Williams**.

"The early, heavy lifting for the group was done by people such as **Laura Mayer**, President of the Association for 17 years,

and Parks officials like Commissioner **Henry Stern** and his team," notes Williams. "They molded the DNA of our group and set the Gold Standard for how we operate within this

community."

"What we do", adds Board Chair, **Judy Howard**, "surprises a lot of people. Many have absolutely no idea of the role the Conservancy plays in maintaining the Park."

The Conservancy's DOs and DON'Ts today have evolved from what the organization has historically done. The achievements and activities of years gone by have ranged from the campus-wide renovation of the playgrounds to playing a significant role in both the renovation of the Dog Runs and the repaving of the Park's entire perimeter sidewalk and tree pits. The list of DO's and DON'Ts that follows is, as they say, current as of this printing. The eager volunteers, Board and staff of the Conservancy are continually on the move and tackling new projects in the Park.

## WHAT THE CONSERVANCY HAS RECENTLY DONE, AND DOES DO

The Carl Schurz Park Conservancy...

- Restored two major lawns in the Park—the 'passive use' lawns to the north of the East 86th Street Mall
- Aerates, mows and trims all Park lawns
- Redesigned and landscaped two centerpiece gardens in the

Park—the 86th Street Mall 'Hoop' Garden and, atop the Hoop Garden stairs, 'Mimi's Gardens'

- Secured \$200,000 in City funds for the complete redesign

and reconstruction of the two dog runs in the Park, the only areas where dogs are permitted to be off-leash

- Evaluates and responds to rodent issues in the Park and funds rodent abatement programs as needed
- Organizes, supervises and supports a base of over 400 volunteer gardeners in the Park for weekly projects and monthly Volunteer Gardening Days
- Funds critical tree care and pruning, to supplement NYC Department of Parks and Recreation efforts
- Regularly purchases and plants annuals, perennials and shrubs throughout the Park
- Regularly purchases gardening supplies and fencing
- Funded the construction of a permanent 4'x16' Gardening Storage Shed
- Funds the regular maintenance, upkeep and sanitizing of the two Park dog runs
- Hires a seasonal gardener to tend the Hoop and Mimi's gardens
- Hires summer interns to help maintain the Park during those critical months
- Manages 15 volunteer 'zone' gardeners who care for specific garden beds
- Recently repointed the north and south East 86th Street mall entry staircases, the pillars



DAVID D. WILLIAMS

Your Conservancy dollars at work: Bartlett Tree Experts tackle dead wood.



DAVID D. WILLIAMS

'Mimi's Garden' in summer.

at the 84th Street entrance to the Playground and the north steps leading to the Peter Pan gardens

- Recently purchased two Big Belly Solar compacting, rodent proof garbage cans for a trial run

Additionally, throughout the year, the Conservancy funds events that bring our community closer together. Along with the financial support of local businesses and corporate sponsors, the Conservancy presents:

- Numerous playground and Park activities for families including the Egg Hunt, playground Sandbox Series of concerts, Harvest Festival Hayride and Pumpkin Patch, and Art Show Crafts
- Summer Sounds outdoor concerts
- Sunset Film Festival open air movies
- The Gracie Square Art Show
- The Halloween Howl dog costume competition
- The Holiday Tree Lighting

#### WHAT THE CONSERVANCY DOES NOT DO:

The Parks Department...

- Picks up garbage
- Pays the salaries of Park gardener, John Tweddle and

various Park workers who sweep, clean and take care of Park repairs

- Shovels and plows snow and places hay bales for winter sledding
- Replaces burned out lights in the Park
- Does bench, pavement and stone repair as needed
- Removes graffiti
- Hires a playground associate each summer
- Cleans Park lavatories and locks them at night
- Assists the Conservancy in its events
- Periodically assigns Park Enforcement Patrol ("PEP") officers to the Park
- Supervises part time cleanup and seasonal workers

Almost as important as what the Conservancy does and what the Parks Department does are the spectacular results of our beneficial partnership. Similarly, the Conservancy considers its strong relationship with the NYPD 19th Precinct a critical link in keeping the Park safe. We also value the support of our elected officials – City Councilmember **Jessica Lappin**, Manhattan Borough President **Scott Stringer**, NYS Assemblyman **Micah Kellner** and NYS Senator **Liz Krueger** – who have been, and remain true and generous friends.

Add to this the Conservancy's friends at Community Board 8 and you have a dynamic team of key players that has a collective eye on the prize: Carl Schurz Park .

So this, in a nutshell, is – as of now – what the Carl Schurz Park Conservancy does... and does not do.

*There will be a quiz in the morning.* ☑

## CONSERVANCY UNDERTAKES STONEMWORK REPAIR

Last summer, in an effort to address our crumbling Park infrastructure, the Conservancy initiated a long-term project of stonework repair. Beginning with areas most in need, the Conservancy oversaw the repointing of the 2 western-most stairs at the 86th Street entrance to the park, the northern stairs in the Peter Pan area, the large 86th Street Esplanade entry stairs and 2 playground entry columns.

This work, which could easily span a decade or more, will repair the crumbling mortar—much of it from the 1939 renovation—throughout our Park. It will require a huge commitment of funds and manpower on the part of the Conservancy.

Added **Judy Howard**, Board Chair and Co-chair of the Gardening Committee, "We feel that there is nothing more glorious or more worth preserving than the elegant stone hardscape that makes Carl Schurz Park so special." ☑



Carl Schurz Park stonework ready for repair.

JUDY HOWARD

## THANK YOU FOR YOUR GENEROUS SUPPORT

The Carl Schurz Park Conservancy is grateful to all those who made a contribution between January 1, 2012 and December 31, 2012. Without your vital support, our efforts at improving the park and offering annual events would be greatly diminished.

### Businesses, Schools, and Religious Organizations

Animal Care and Control  
The Brearley School  
Calling All Pets  
The Chapin School  
City MD  
Dorian's Seafood Market  
Eric Landgraf Florist  
Freshpet  
Gillakays Pet Getaway  
Halstead Property  
New York Yoga  
Oliver's Dog and Cat Clinic  
Ottomanelli Brothers  
P226M  
Scribble Press  
Stella and Chewy's  
The Dog Spa  
VCA Antech, Inc.  
VCA Veterinary Hospitals  
Weruva

### Public Funding

Assemblyman Micah Kellner  
Senator Liz Krueger  
Council Member Jessica Lappin  
Borough President Scott Stringer  
NYC Department of  
Parks and Recreation  
Partnership for Parks

### Benefit Dinner Hosts

Deborah Berke and  
Peter D. McCann, M.D.  
Sarah Beatty Buller and  
Mark Buller  
Beth and Mike Fascitelli  
Jennifer and Trey Laird  
Claire and Chris Mann  
Ellen and Ken Roman  
Shilpa and Arvind Sanger

Nancy and Mitchell Steir  
Alan and Barbara Washkowitz  
Giulia and Mark Weisman

### Individuals

#### \$50,000 and above

Pat and Peter Nadosy  
Donald Pels and Wendy Keys  
Anonymous (1)

#### \$25,000 to \$49,999

Larry and Judy Howard

#### \$10,000 to \$24,999

Sandye Berger  
Donald M. and  
Mary Gordon Roberts  
Larry and Mary McCaffrey  
Carl and Pam Navarre  
Fiona and Eric Rudin  
Lenard and Fern Tessler

#### \$5,000 to \$9,999

1 Gracie Square  
120 East End Avenue  
520 East 86th Street  
Robert F. Gossett, Jr.  
Leo S. Walsh Foundation  
Jeffrey Liss  
Frank and Francine Murphy  
Richard E. Salomon and  
Laura Landro  
Marvin and Mimi Sandler  
Ira and Jody Schwartz  
Ora and Howard Smith  
Clare and Jerry Thomas  
Alan and Barbara Washkowitz  
Leonard and Beth Wilf  
Anonymous (1)

#### \$2,500 to \$4,999

Doug and Elena Atkin  
Brook and Roger Berlind  
City MD  
Peter and Faith Coolidge  
Susan and Philip Heide  
Walter and Judith Hunt  
Tom and Terry Lamb  
Joseph and Barbara Lane  
Christopher and Cathy  
Lawrence  
Greta G. Loomis  
Margaret Mellon  
Hitchcock Foundation  
Barbara Nessim and  
Jules Demchick  
New York Yoga  
Scott and Pam Schafner

#### \$1,000 to \$2,499

Eric and Naomi Altmann  
Edward and Steena Auchincloss  
Ginette and Joshua Becker  
George and Evelyn Benjamin  
Fritz Beshar and Peter Lehner  
LeeAnn and Jeffrey Black  
Thomas and Marcia Borger  
Susan and Richard Braddock  
Susan and Don Brant  
The Brearley School  
Pat and Stanley Brilliant  
John and Elena Brim  
Elena Brody  
Lisa and Dick Cashin  
Dr. Michela Catalano and  
Dr. Stephen Baum  
Stewart and Cornelia Clifford  
Michael and Deborah Colacino  
Jeffrey Crespin  
Susan and Greg Danilow  
Richard and Francesca Diamond  
John and Jodie Eastman

Robert and Margaret Fagenson  
Celeste Ford and  
Fredric Leopold  
Timur Galen and  
Linda Genereux  
Ashley Garrett and Alan Jones  
Dolly and John Geary  
Ellen Gendler, M.D. and  
James Salik, M.D.  
The Raymond P. Ginther  
and Marie M. Ginther  
Charitable Fund  
Ted and Hilary Giuliano  
Cathy Glaser and  
Stephen Semlitz  
Amy Glickman and  
Andrew Kuritzkes  
John R. Gordon  
David and Cari Grodner  
Miguel and Vivian Haime Barg  
Barney and Julia Hallingby  
Fernand and Patricia Hayot  
Mary Henry and Howard Rubin  
Robert and Marcia Horowitz  
Edward and Caroline Hyman  
Mel and Barbara Immergut  
Ali and Peter Jennison  
Herbert J. Kayden, MD. and  
Eleanor Killian  
Kazie Metzger  
and John C. Harvey  
Charitable Fund  
Kenneth Martin and Christine  
Hepburn Foundation  
Anthony and Laura Klarman  
Amy Kuhn and Stuart Rosow  
Ralph and Nina Levene  
Ulises and Christina Liceaga  
Roger and Florence Liddell  
Carl and Nancy Lieberman  
Ann Lozman and Jay R. Harris  
Page and Peter MacDonald

Caryn and Jim Magid  
 Trevor and Meghan Magyar  
 Reina Marin and Emilio Bassini  
 Jeanne and Joseph Mazzetti  
 Stephen and Carolyn McCandless  
 Colin and Dee McKechnie  
 Mark and Jennifer Monaco  
 Maureen Moreau  
 Evie Muller  
 Brooke and Daniel Neidich  
 Robert and Anita Nelson  
 Thomas Oreck  
 Claudia and Gunnar Overstrom  
 Martin and Doris Payson  
 Barry and Elizabeth Pearson  
 Andrew and Clare Pickering  
 Charles Platt and Maureen McAllister  
 Lee and Nick Potter  
 Michael and Lee Profenius  
 Yvonne S. Quinn  
 Paula Sarnoff Oreck  
 R. Owen Richards and Julie Smith  
 Theodore O. Rogers  
 Lisa Roumell and Mark Rosenthal  
 David and Jeanette Rubenstein  
 Julie and Rick Ruvkun  
 Wendy and Ian Sacks  
 Jake and Cindy Scheinerman  
 Michael and Lisa Schultz  
 Eric and Erica Schwartz  
 Marilyn Seifert  
 Peggy and Crossan Seybolt  
 William and Fay Shutzer  
 Moses Silverman and Betty Robbins  
 Aaron and Joanna Sirulnick  
 Rob and Cornelia Spring  
 Joseph and Clinton Standart  
 Jean Stein, JKW Foundation  
 Louise H. Stephaich  
 Daryl and Russell Stern  
 David and Melite Sweet  
 Ranjan and Chandrika Tandon  
 John and Louisa Troubh  
 Monica and Andrew Vogelstein  
 F. T. Wegmann  
 Dr. Monica and Mr. Andrew Weinberg

Anonymous (2)  
**\$500 to \$999**  
 Ellen Asher  
 Gene Bernstein  
 Stan and Susan W. Bernstein  
 Ann and Joel Berson  
 Ruth Calvin Scharf  
 Carol and Ed Cimilluca  
 Jeff and Connie Collier  
 Anne Alexis Cote Taylor  
 Kenny Creed and Alex Wallace  
 Margaret D'Albert  
 Bettina and Brian Decker  
 Jordan and Kim Dickstein  
 David and Carol Domina  
 Thomas and Miriam Farmakis  
 Sharon Flescher  
 Florence V. Burden Foundation  
 Patricia and Richard E. Grey  
 Carol J. Haley  
 Ellen K. Halsted  
 Joan Hardy Clark  
 Eugenie and Horace Havemeyer III  
 David and Molly Helfet  
 John and Felicia Hendrix  
 Peter and Karen Jakes  
 Pamela Jones  
 Steven Klugman and Mary Faucher  
 Joel Kurtzberg  
 Maria Lucca and Richard K. Carrier  
 James and Amira Luikart  
 Chris and Claire Mann  
 Robert and Cornelia Marakovits  
 Leonard Majzlin and Carol Hall  
 Dorian Mecir  
 Edward Miller  
 Helen Milne  
 Alexander and Lynne Neave  
 Brenda Neubauer Straus  
 David and Melanie Niemiec  
 Robert O'Brien  
 Edward and Ellen Oelsner  
 James O'Mara  
 Stuart Orsher and Gladys George  
 Michael and Elena Patterson  
 Bradford and Gail Rodney

Kenneth and Ellen Roman  
 Amy and William Rosenblum  
 Jeffrey and Cari Schnipper  
 Pamela Shiells and Gary Heinze  
 Anne Sidamon-Eristoff  
 Carolyn Skiffington and Gary Schechter  
 Virginia B. Slaughter  
 Margaret D. Sullivan  
 Caroline Sutton and Neil Olson  
 Ellen and Bill Taubman  
 Howard Teich  
 John F. Tweddle  
 Mary Kay Vyskocil  
 Arete Warren  
 David Wood and Nancy Judge, M.D.  
 Salvatore J. Zizza  
**\$250 to \$499**  
 Efrat Aharonovich  
 Naomi and James Altschul  
 Carlton R. Asher  
 Ellen A. Becker  
 Maureen Duffy Benziger  
 Mark C. Binting  
 Andre Bishop and Peter Manning  
 Loraine Boyle  
 Cynthia Breen and Laurie Dowley  
 Heleen Brody and Jeffrey Lang  
 Nancy Bronstein and Joseph Sponholz  
 Mario and Carolyn Cibelli  
 Jack Cogen  
 Jan Colucci  
 Catherine and Alfredo De Vido  
 Eugene DePasquale and Agatha Nody  
 Antonia Derezeas  
 Elizabeth Dobell  
 Stanley J. Dusek  
 Thomas and Claudia Eff  
 Janice and John Ewing  
 Ruth Ezra  
 Sheila and Marc Farina  
 Marilyn and Bob Fassberg  
 Felberbaum Family  
 Anthony J. Fiorella, Jr.

Barbara Frankfurt  
 Lawrence and Alice Friedland  
 Eileen and Joseph Giampaolo  
 Ann M. Gorycki  
 Edward and Evelyn Halpert  
 Hal and Sheila Handel  
 Laurel E. Henschel  
 Russel Huang  
 Karen and Jeff Hughes  
 Dara Hunt  
 Tracy and Gary Israel  
 Anthony and Joan Japha  
 Susan Jordan and Timothy Clifford  
 Thomas and Simi Kahn  
 Bob and Sue Kamm  
 Micah Kellner  
 Arnold and Nina Kling  
 Jennifer and Trey Laird  
 Alexa Lambery and Chauncey Parker  
 Alfred and Carol Landess  
 Eric and Emmie Lee  
 Robert and Penny Lieberberg  
 Emma Lozman  
 Julie A. Luttinger  
 Alan D. Mantel  
 Janet Mavec and Wayne Nordberg  
 David W. Mayo  
 Robert and Mary Ellen McMillan  
 Ann Meschery  
 Susan Minkowitz and David Calderon  
 Whitney and Clark Murphy  
 Janet Nagel  
 Karen J. Nelson  
 Janice and Yoji Nimura  
 Dr. Alex Oreck  
 Brian Oreck  
 Gregory Oreck  
 Jessica Oreck  
 Ottomanelli Brothers  
 Ann M. Packard  
 Patty and Peter Paine  
 Donna and Cary Park  
 Coles H. Phinizy, Jr.  
 David Pollack  
 Maryann Popiel, M.D.  
 Tom and Sandy Reece  
 Ellen and Bruce Ressler

Frederick Rohn and  
Frances Lipka  
Neil Roman  
Stephen N. Sachman  
Brenda Sauer  
Samantha Schmidt  
Elizabeth Schriever and  
John Brandow  
Robert and Katerina Shaw  
Stacey J. Sheeley  
Matthew and Priscilla Snyder  
Dr. and Mrs. Harold Spalter  
Susan W. Stachelberg  
Mary and David Tobin  
Marjorie Udelf  
Gerald and Melissa Uram  
Dr. Bonnie Uslianer and  
Rick Lepsinger  
Bragg and Hayley Van Antwerp  
Jonathan Vapnek  
Annette Vass  
Mr. and Mrs. Steven Weissman  
Anonymous (2)

And our thanks to over 770 contributors whose donations of \$1 to \$249 totaled more than \$46,900.



ROBER ENGLEBRIGHT

## NY STATE ASSEMBLYMAN MICAH KELLNER SECURES \$15,000 GRANT FOR CONSERVANCY EVENTS



NY Assemblyman Micah Kellner.

The mission statement of the Conservancy includes the words "to restore and beautify". It also includes the words "sponsors community events". Developed and grown over the past several decades, the playground events, summer concerts, movies, Art Show, Halloween Howl... and the Holiday Tree Lighting... are cherished seasonal programs that involve hundreds and thousands of neighbors. And

further enhance the role of the Park as the community's true center.

The costs to produce these programs just got some relief, thanks to a \$15,000 New York State grant secured by Assemblyman Micah Kellner. As the first official grant awarded to the Conservancy's events, it represents further evidence of just how much the community values these programs.

Said Executive Director David D. Williams, "Micah has walked side by side with the Conservancy as we have grown. And as we have strengthened our profile in the community. This generous grant will go a long, long way to helping us fund the events that so many of our neighbors tell us help define Carl Schurz Park for them."

Board member Lisa Latcholia,

who also chairs the Playground Committee says, "The playground committee is thrilled with the generous gift from Micah Kellner's office. It will enable us to support the wonderful traditions of the Egg Hunt and Harvest Festival, and the music and arts programs throughout the year."

Finally, added Ann Meschery, the Conservancy's Director of In-Park Events, "The next time you see Assemblyman Micah Kellner around the Park, and you see him there quite often, say a BIG THANK YOU. The recent generous grant he secured will help fund the many events we put on in the park and in the playground. Assemblyman Kellner really cares about the community he serves so diligently".

Yes, Virginia. There really is a Micah Kellner. ☺

## THE PERFECT TREE MAP QUEST... COMPLETED!!

*The Trees of Carl Schurz Park* is here! Donors at the Guild level have received copies already. It will be available at Conservancy events for \$20 or on our web site for \$25. The 3 foot long, 1 foot wide map has the key (Latin and common names) on one side and the map of our Park on the other. Folded up, it measures 6" by 12". The final count as of December 2012 is 636 trees in 52 genera with 135 species/cultivars. Called 'a triumph' by one of our neighbors, the tree map is a wealth of information for Park visitors and tree lovers. ☺



## CARL SCHURZ PARK CONSERVANCY EVENT CALENDAR!



### 2013 VOLUNTEER GARDENING SCHEDULE

Join your neighbors and pitch in! Volunteer as a CSPC gardener:

**Saturdays from  
9:30 a.m. to 12:30 p.m.**

Location: East 86th Street  
Mall at East End Avenue

Please note:

The Carl Schurz Park Volunteer Gardeners are an adult group that meets monthly to work in the Park. Students or children who wish to participate must be accompanied by an adult or parent with whom they work.

**April 20**

**May 18**

**June 15**

**July 20**

**August 17**

**September 21**

**October 19**

**November 16**

**December 14**

All Saturdays. No Rain Dates

**Saturday, May 11**

**9:30 a.m. to 4:30 p.m.**

**PLANT SALE**

Rain or shine

### CHILDREN'S ACTIVITIES

**Saturday, April 20**

**1:00 p.m. to 3:00 p.m.**

**EARTH DAY PLANT A POT**

Rain or shine

**Saturday, May 18**

**2:00 p.m. to 4:00 p.m.**

**FAMILY DAY**

Manhattan Chamber of  
Commerce/Second Ave  
Business Association Family  
Day in Carl Schurz Park  
Make a square for our  
community quilt! Family  
concert and face painting!!



**Tuesdays,  
July 16, 23 & 30**

**August 6 & 13**

**4:00 p.m.**

**SUMMER**

**SANDBOX SERIES**

Weather permitting

### SUMMER SOUNDS

The Conservancy's wonderful  
SUMMER SOUNDS  
concert series returns to the  
John Finley Walk again  
this year. All concerts held,  
weather permitting, atop the  
East 86th Street staircase,  
overlooking the East River.  
Limited seating on a first  
come, first served basis.

**Wednesday,  
July 10 7:00-8:30 p.m.**  
**KENN MORR AND BAND**

**Wednesday,  
July 24 7:00-8:30 p.m.**  
**STEVE SHAIMAN AND  
SWINGTIME BIG BAND**  
Back for a *fourth* summer!

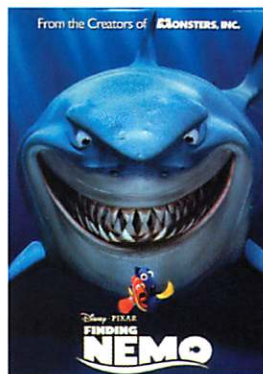
### SUNSET FILM FESTIVAL

Head to the East River  
for the "Fathers and Sons"  
Film Festival 2013.  
Movies start at 8:30 p.m. in  
the Basketball/Hockey Courts

Limited Seating  
FREE POPCORN!

**Monday, July 29**

**FINDING NEMO**



**Tuesday, August 13**  
**INDIANA JONES AND  
THE LAST CRUSADE**



Visit the City's premiere  
open-air Art Show, now in  
its 41st year!

**Saturday & Sunday,  
October 5 & 6**

**10:00 a.m. to 5:00 p.m.**

East End Avenue from  
East 84th St. to East 88th St.  
[www.graciesquareartshow.info](http://www.graciesquareartshow.info)

### HALLOWEEN HOWL & HEALTHY HOUND FAIR



All sizes of dogs in all sorts  
of costumes compete for a  
variety of prizes. And FAME!  
Now, for the fourth year in a  
row, visit the HALLOWEEN  
HOWL HEALTHY HOUND FAIR  
to learn all about the healthy  
ways to keep your Best  
Friend in the Best of Health!!

**Sunday, October 20**

**1:00 p.m. to 3:00 p.m.**

Location:

Basketball/Hockey Courts

### HOLIDAY TREE LIGHTING

A beloved family tradition.  
Guest Choir, Cantori, New  
York plus Orbital Brass Band  
Hot Chocolate, Cookies,  
Candy Canes!!

**Sunday, December 8**

**5:00 to 6:00 p.m.**


Location: East 86th Street  
and East End Avenue

Held snow, rain or balmy weather!

## BUSINESS SUPPORTER PROFILE: DORIAN MECIR AT DORIAN'S SEAFOOD MARKET

A longtime financial supporter of the Carl Schurz Park Conservancy events, Dorian's Seafood Market is a blue chip example of how a community business stands out as a partner to a worthy community cause. Located at 1580 York Avenue, between East 83rd and 84th Streets, Dorian's annual support and promotion of Park events have enhanced the store's visibility in the area. And well beyond:

"We are proud to be a part of the stellar community," Dorian and her husband Steve Mecir write. "Carl Schurz Park is an oasis right in our own backyard. Being a business sponsor and donor has brought us closer to our customers while, at the same time, introducing our 'fish boutique' to more local residents."

If your business would like to enhance its role in the community by supporting the events in Carl Schurz Park, please call Meg Cleary at the Conservancy office at 212-459-4455. She will forward your contact information on to the right sponsorship development coordinator. 




Dorian Mecir displays her Conservancy notice of thanks.

DAVID WILLIAMS

## BOARD MEMBER LARRY MCCAFFREY ELECTED VICE CHAIR

With three years under his belt as a member of the Board of the Conservancy, **Larry McCaffrey** continues to bring a great deal to the table. Active on the Governance, Tree and Finance Committees, Larry has played a vital role in preparing the Conservancy for the long haul.

Appointed as the Board's Vice Chair, Larry will play an even greater part as the Conservancy expands its stewardship of the Park.

"I am delighted to participate in whatever role the Board believes will be helpful," Larry notes. "What has impressed me in my three years on the Conservancy Board is the deep level of volunteer commitment to the Park and the activities of the Conservancy. This is one of those special New York institutions that we can serve with pleasure because of what it does for the broad community. I am very happy to be part of that all the more because I believe a beautiful park such as ours is a critical asset to a vibrant neighborhood." 

# GIVING BACK TO A 'SPECIAL PLACE': BARBARA WASHKOWITZ, "BOSCHIE" AND WALKS IN THE PARK

Once upon a time, in a neighborhood far, far away, Barbara Washkowitz's local park was Central. Raised on West 77th Street, just off Central Park West and notable as the site for staging the Macy's Thanksgiving Day Parade, Barbara spent her formative "park" years there.

Nowadays, three children (and 3 grandchildren) later, Barbara's park is Carl Schurz where, she admits, she spends more time with her maltipoo, **Bosch\***, than she actually did when her children were young.

When asked by Executive Director **David Williams**, himself a dog owner, how important a park is to a loving dog owner such as she, Barbara quickly answered, "Crucial! The beauty of CSP is that it is small, and allows one to thoroughly explore the 'ups and downs' and 'ins and outs' of hidden paths and walkways that are blessed by what we consider 'our' river. Since both dog runs are popular places to visit during the day and night, I usually gravitate towards those areas in the evening since I've always believed there's safety in numbers."

Active in a number of philanthropic causes, including ARF – Animal Rescue Fund of the Hamptons, Barbara has added Carl Schurz Park Conservancy to her list of worthy causes, thanks in no small part to the efforts of the Conservancy's Guild Committee who have described the evolving role the Conservancy plays in the



Executive Director David D. Williams, "Boschie" and Barbara Washkowitz discuss the why's of giving to the Conservancy.

DAN NELKEN

health and maintenance of the Park.

"I've always lived in close proximity to a park," Barbara notes. "Alan and I have lived in this apartment (overlooking the East River and steps away from the Finley Walk entrance to the Park) for more than twenty-five years. At that time, we were thrilled to find an apartment that was suitable for our family, and its proximity to the Park made it an ideal location for raising a large family in the heart of the city."

While Carl Schurz Park, like Paris, is a moveable feast for people who have moved and left it behind, for "lifers" like the Washkowitz's, the Park remains a community resource unlike any other:

"When my kids were young, we used to take them to the

playground and rarely missed a chance to sled down the hills near Gracie Mansion. In time, the park became a haven of sorts—a place to simply walk, talk, and enjoy the river and seasonal changes. At critical moments, my daughter and I would always look at each other and say, 'It's time for a walk in the park.' Even though she is all grown up now, we still return to the Park for a dose of tranquility and peace. It's a very special place that has witnessed the ups and downs of my life."

Asked why she includes the Conservancy on her family's list of worthwhile causes, Barbara was again quick to respond:

"Because if you live in this neighborhood the Park is so central to all of our lives. In addition to providing recreational activities for children and a

place to run free for our canine friends, it's the perfect spot to run into acquaintances and meet new neighbors.

"People usually support organizations that directly touch their lives in one way or another," she added. "I don't know what I would do without Carl Schurz Park! Where would I walk my dog? Where would I take my grandchildren to play? How would I catch up on neighborhood gossip?"

Finally, when asked what she would say to people who move into this neighborhood, she laughs and says, "That's an easy one. Please support our Park! It's not only wonderful because it's green but because it's like a work in progress. It's always getting better." 🐾

\* Named after detective Harry Bosch in the crime thrillers written by Michael Connelly.



**BARBARA  
WASHKOWITZ:  
'WHY I SUPPORT THE  
CONSERVANCY',  
PAGE 11**



**ASSEMBLYMAN  
MICAH KELLNER  
SECURES GRANT  
FOR CONSERVANCY  
EVENTS, PAGE 8**

**THE CONSERVANCY SALUTES  
ITS GENEROUS DONORS, PAGE 6**

## THE CONSERVANCY'S I-TEAM TACKLES TRASH

After extensive research conducted by Infrastructure Committee members Clare Thomas and Kenny Creed, the Conservancy will purchase 2 new state-of-the-art garbage receptacles to test in our Park. Called the "Big Belly", this garbage can is like no other. Utilizing solar panels and a computer chip, this receptacle not only compacts garbage, but also sends an email alert when the can is full. Currently being used in many parks throughout the city, it is proving to be an effective means for garbage disposal. Labor efficient with the added benefit of being rat proof, we hope it proves to be a great addition to Carl Schurz Park. 📧



Coming to a Park near YOU!: the 'Big Belly'.



### Mission Statement of The Carl Schurz Park Conservancy

The mission of the Carl Schurz Park Conservancy is to restore and beautify Carl Schurz Park, complementing the efforts of the New York City Department of Parks and Recreation. Our goal is to enhance the public's enjoyment and involvement in the Park.

The Conservancy organizes volunteers to execute its projects and sponsors community events that are open to all.

**PARK NOTES**  
Editor & Writer  
David D. Williams  
Design  
Barbara Lee Chapman

The Carl Schurz Park Conservancy is a 501 (c) 3 organization.  
Printed on recycled coated text with soy based inks  
Ecofriendly Printer, a Greg Barber Company



### BOARD OF DIRECTORS

Judy Howard  
Chair  
Larry McCaffrey  
Vice Chair  
Fran Murphy  
Treasurer  
Lisa Latcholia  
Secretary

Sandye Berger  
William T. Castro  
Susan Heide  
Nina Mortellito  
Pat Nadosy  
Marvin Sandler  
Henry J. Stern  
Clare Thomas

David D. Williams  
Executive Director

Ann Meschery  
Director of In-Park Events

Banford Weissmann  
Seasonal Gardener

Meg A. Cleary  
Executive Assistant

**Carl Schurz Park Conservancy**  
1562 First Avenue, Suite 331  
NY, NY 10028-4004  
212.459.4455